

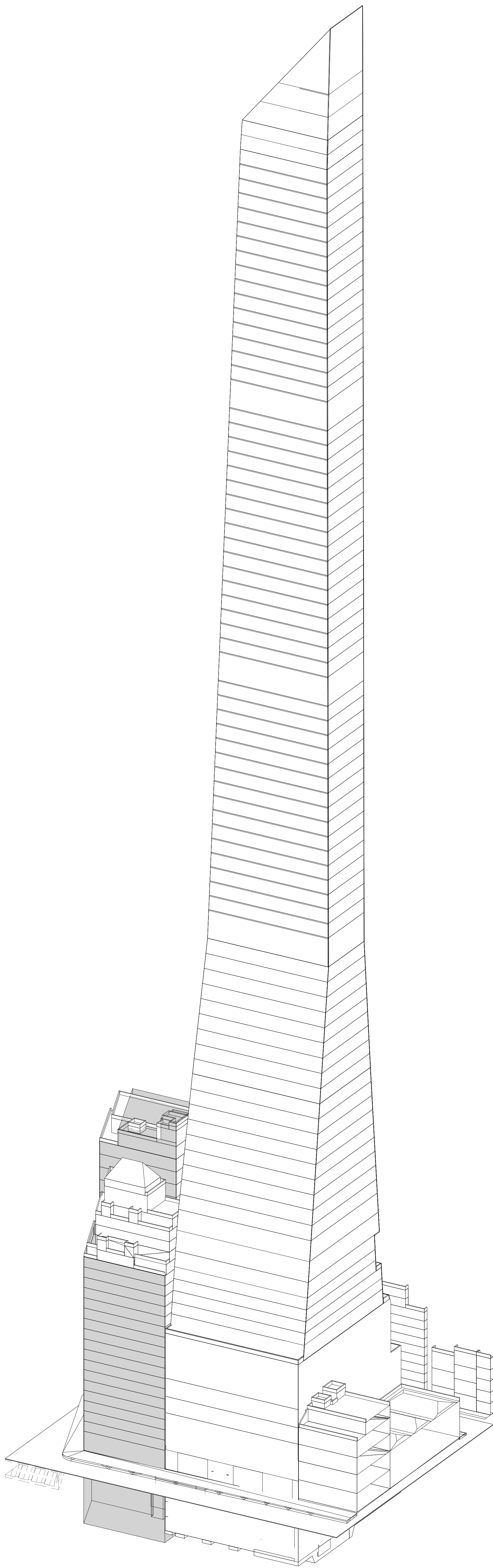
217 WEST 57TH STREET
NEW YORK, NEW YORK

CLIENT
EXTELL DEVELOPMENT

ARCHITECT
AAI ARCHITECTS, P.C.

STRUCTURAL ENGINEER
WSP CANTOR SEINUK

DRAWING LIST				
SHEET NO.	DWG. NO	TITLE	REVISION / ISSUE	
			DATE	SUBMISSION
1	FO-001	GENERAL NOTES ABBEVIATIONS AND LEGEND	23 JAN. 2013	D.O.B. SUBMISSION
2	FO-100	FOUNDATION PLAN	23 JAN. 2013	D.O.B. SUBMISSION
3	FO-200	TYPICAL CONCRETE DETAILS 1	23 JAN. 2013	D.O.B. SUBMISSION
4	FO-201	TYPICAL CONCRETE DETAILS 2	23 JAN. 2013	D.O.B. SUBMISSION
5	FO-202	TYPICAL CONCRETE DETAILS 3	23 JAN. 2013	D.O.B. SUBMISSION
6	FO-300	FOUNDATION SECTIONS I	23 JAN. 2013	D.O.B. SUBMISSION
7	FO-301	FOUNDATION SECTIONS II	23 JAN. 2013	D.O.B. SUBMISSION
8	FO-302	FOUNDATION SECTIONS III	23 JAN. 2013	D.O.B. SUBMISSION
9	FO-303	FOUNDATION WALL ELEVATIONS	23 JAN. 2013	D.O.B. SUBMISSION
10	S-950	COLUMN SCHEDULE	23 JAN. 2013	D.O.B. SUBMISSION



Damian Titus

Buildings

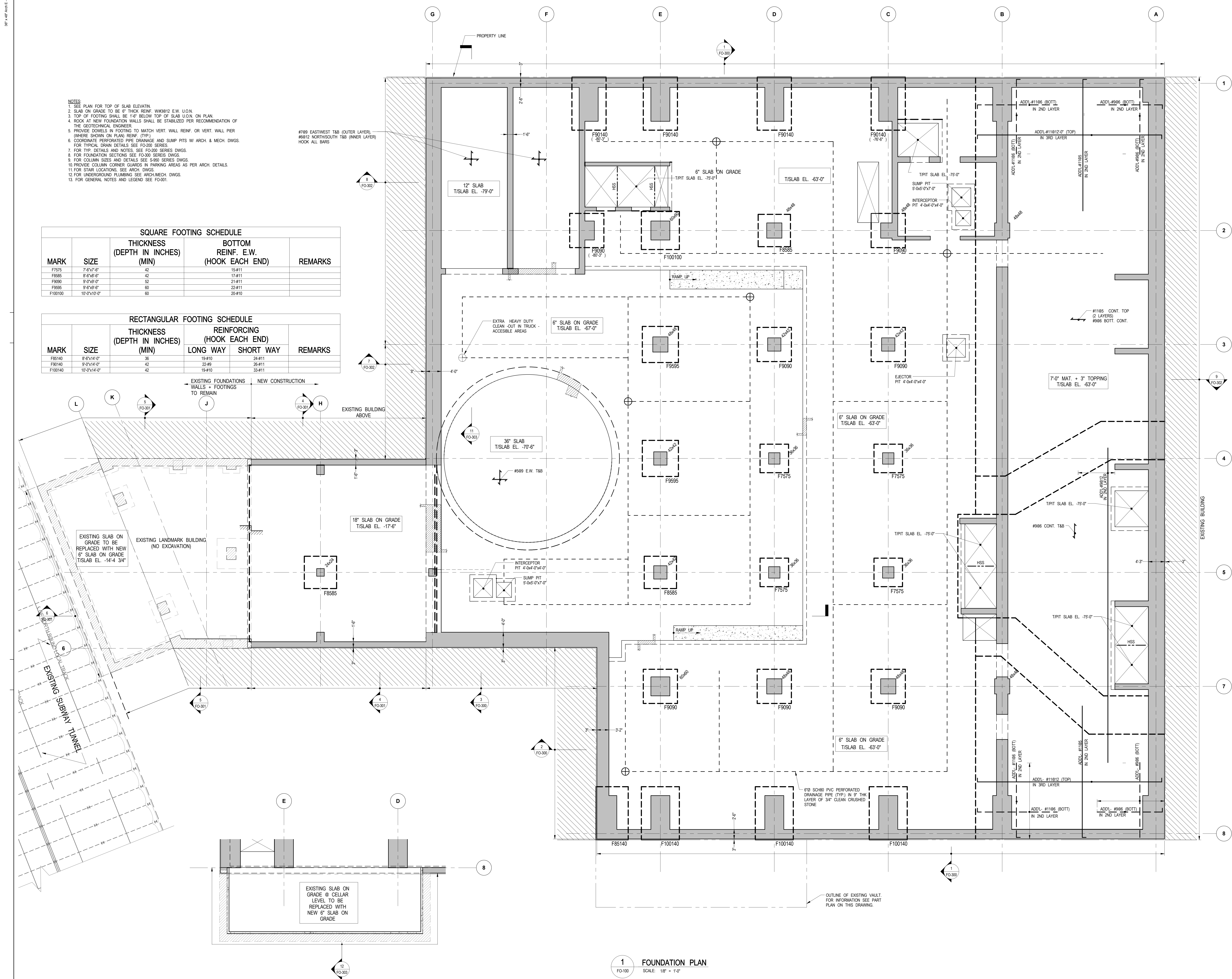
APPROVED

Under Directive 2 of 1975

Date/Time: Mar 10, 2014 - 10:17 AM

NYC Development Hub

36" x 48" x 1/2" SHEET SIZE



- NOTES:
1. SEE PLAN FOR TOP OF SLAB ELEVATION.
 2. SLAB ON GRADE TO BE 6" THICK REINFORCED WITH #3 @ 12" O.C.
 3. TOP OF FOOTING SHALL BE 1'-0" BELOW TOP OF SLAB U.O.N. ON PLAN.
 4. ROCK AT NEW FOUNDATION WALLS SHALL BE STABILIZED PER RECOMMENDATION OF THE GEOTECHNICAL ENGINEER.
 5. PROVIDE DOWELS IN FOOTING TO MATCH VERT. WALL REINFORCING OR VERT. WALL PIER (WHERE SHOWN ON PLAN REINFORCING (TYP)).
 6. COORDINATE PERFORATED PIPE DRAINAGE AND SLUMP PITS W/ ARCH. & MECH. DWGS. FOR TYPICAL DRAIN DETAILS SEE F0-200 SERIES.
 7. FOR TYP. DETAILS AND NOTES, SEE F0-300 SERIES DWGS.
 8. FOR FOUNDATION SECTIONS SEE F0-300 SERIES DWGS.
 9. FOR COLUMN SIZES AND DETAILS SEE S-600 SERIES DWGS.
 10. PROVIDE COLUMN CORNER GUARDS IN PARKING AREAS AS PER ARCH. DETAILS.
 11. FOR STAIR LOCATIONS, SEE ARCH. DWGS.
 12. FOR UNDERGROUND PLUMBING SEE ARCH. MECH. DWGS.
 13. FOR GENERAL NOTES AND LEGEND SEE F0-001.

SQUARE FOOTING SCHEDULE				
MARK	SIZE	THICKNESS (DEPTH IN INCHES) (MIN)	BOTTOM REINFORCING E.W. (HOOK EACH END)	REMARKS
F7575	7'-6"x7'-6"	42	15-#11	
F8585	8'-6"x8'-6"	42	17-#11	
F9090	9'-0"x9'-0"	52	21-#11	
F9595	9'-6"x9'-6"	60	22-#11	
F100100	10'-0"x10'-0"	60	20-#10	

RECTANGULAR FOOTING SCHEDULE					
MARK	SIZE	THICKNESS (DEPTH IN INCHES) (MIN)	REINFORCING (HOOK EACH END)		REMARKS
			LONG WAY	SHORT WAY	
F85140	8'-6"x14'-0"	36	15-#10	24-#11	
F90140	9'-0"x14'-0"	42	22-#9	26-#11	
F100140	10'-0"x14'-0"	42	19-#10	33-#11	

#789 EASTWEST T&B (OUTER LAYER)
#812 NORTHSOUTH T&B (INNER LAYER)
HOOK ALL BARS

2 PART PLAN AT EXISTING VAULT
SCALE: 1/8" = 1'-0"

1 FOUNDATION PLAN
SCALE: 1/8" = 1'-0"

KEY PLAN:

PROJECT NORTH

TRUE NORTH

DEVELOPER:
EXTELL DEVELOPMENT COMPANY
805 THIRD AVENUE, 7TH FLOOR
New York, NY 10022 USA
TEL: 212-712-6000 FAX: 212-712-6100

ARCHITECT OF RECORD: Base Building Shell & Core
AAI ARCHITECTS, P.C.
401 Wellington St. W., 3rd Floor
Toronto, ON M5V 1E7 Canada
TEL: 416-967-1500 FAX: 416-967-1750

STRUCTURAL ENGINEERS:
WSP CANTOR SEINUK
228 EAST 43rd Street
New York, NY 10017 USA
TEL: 212-687-9888 FAX: 646-487-5501

MEP ENGINEERS:
AKF GROUP
1501 Broadway
New York, NY 10036 USA
TEL: 212-354-5656 FAX: 212-354-5668

GEOTECHNICAL ENGINEERS:
Langan Engineering & Environmental Services
21 Penn Plaza - 360 West 31st Street, 8th Floor
New York, NY 10001-2727
TEL: 212-479-5400 FAX: 212-479-5444

CODE CONSULTANTS:
Construction Consulting Associates
100 Church Street
New York, NY 10007
TEL: 212-385-1818 FAX: 212-385-1911

WSP CANTOR SEINUK
STRUCTURAL ENGINEERS
228 EAST 43RD STREET
NEW YORK, NEW YORK 10017
TEL: 212-687-9888 FAX: 646-487-5501 WWW.WSPCANTORSEINUK.COM

No.	DESCRIPTION:	DATE:
00	MTA SUBMISSION	17 SEPT 2012
01	D.O.B. SUBMISSION	23 JAN. 2013

0 4'-0" 8'-0" 16'-0"

D.O.B. SUBMISSION

Discrepancies must be reported immediately to the Architect before proceeding. Only figured dimensions are to be used. Corrections must check all dimensions on site. This drawing is protected by copyright.

ALL DIMENSIONS ARE SHOWN IN IMPERIAL.

CONSULTANT:
WSP CANTOR SEINUK
STRUCTURAL ENGINEERS
228 EAST 43RD STREET
NEW YORK, NEW YORK 10017
TEL: 212-687-9888 FAX: 646-487-5501 WWW.WSPCANTORSEINUK.COM

PROJECT:
217 WEST 57TH STREET
NEW YORK, NY

DRAWING TITLE:
FOUNDATION PLAN

SEAL & SIGNATURE:

DATE: 23 JAN. 2013

PROJECT No: 2012133

DRAWN: CADD REV: BS

CHK: BS

SCALE: 1/8" = 1'-0"

DWG No: 2 OF 10

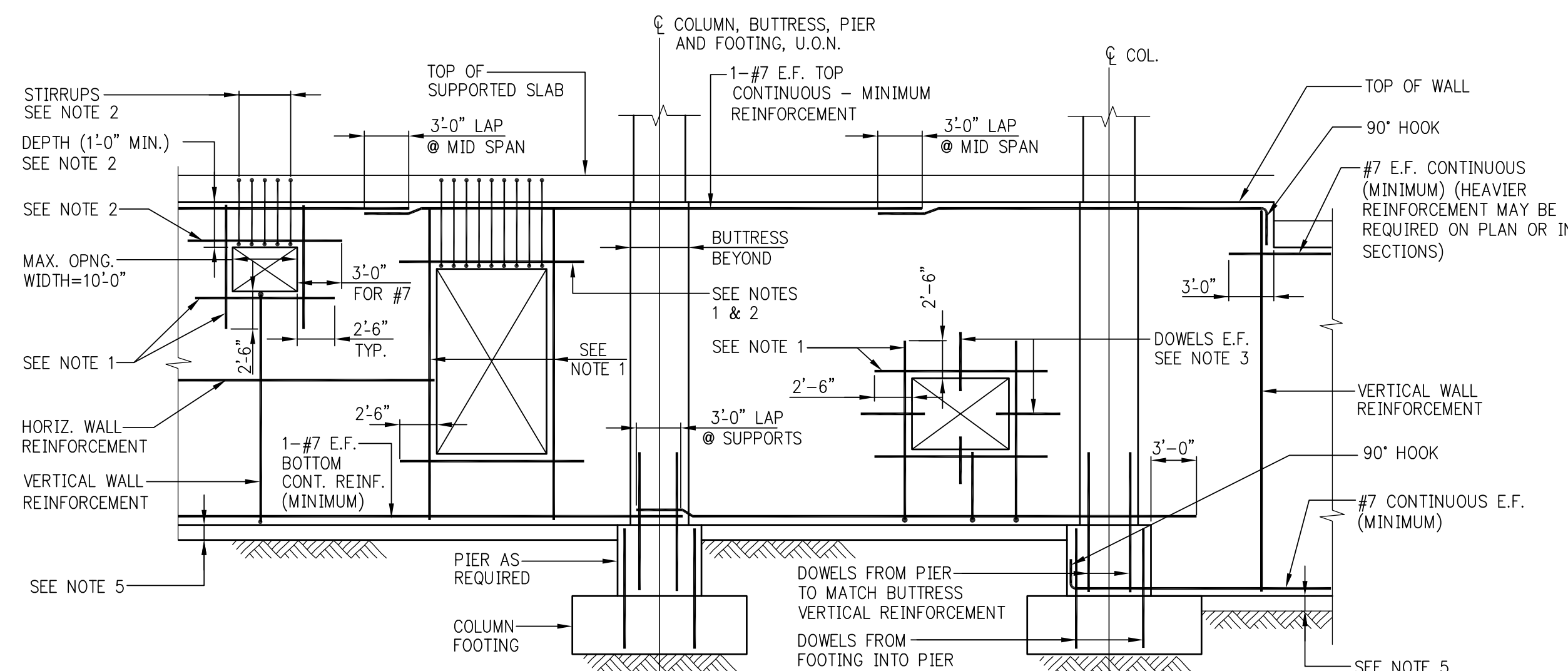
DOB PAGE No: 2 OF 10

DOB B-S-CAN

APPROVED
Under Directive 2 of 1975

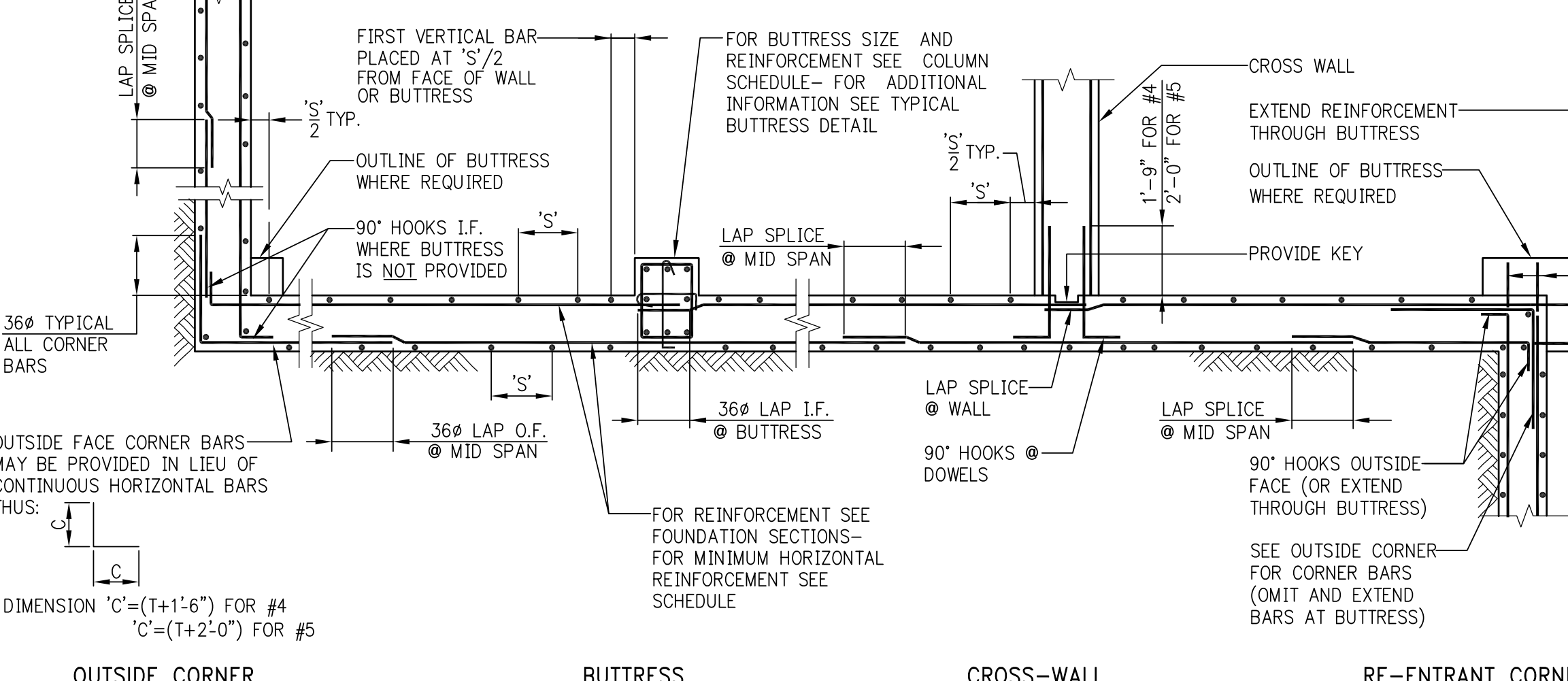
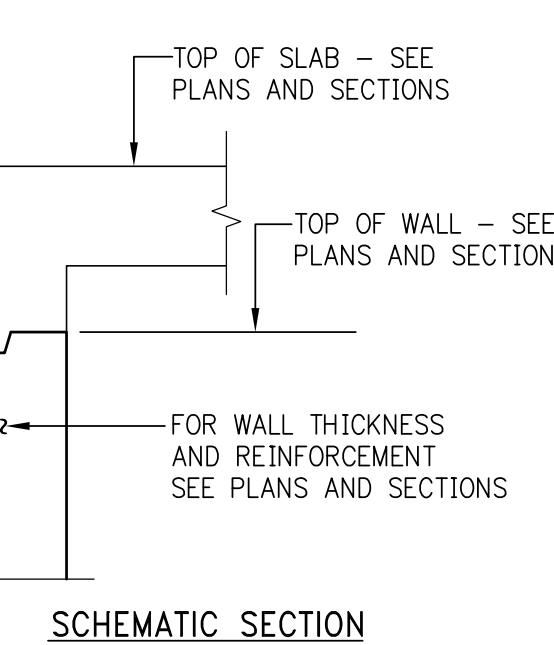
Date/Time: Mar 10, 2014 - 10:17 AM

NYC Development Hub



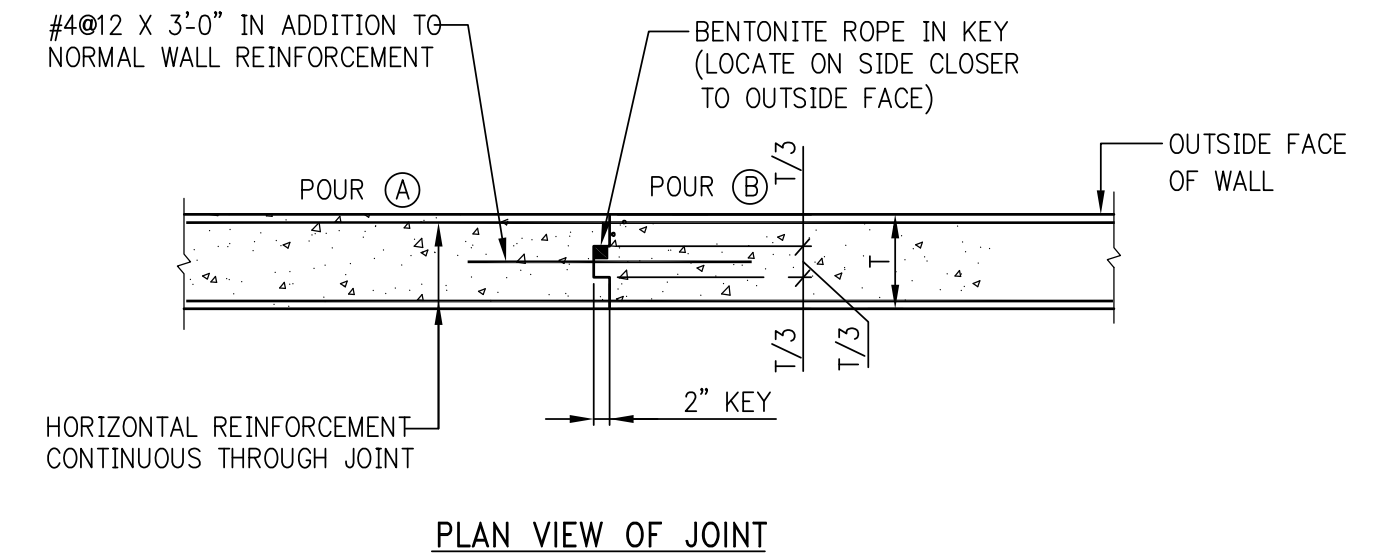
FOUNDATION WALL ELEVATION SHOWING REINFORCEMENT AT OPENINGS AND MISCELLANEOUS DETAILS

- NOTES:**
1. ADD #5 BARS (HORIZ. & VERT.) AT ALL FOUR EDGES OF OPENINGS. AREA OF ADDED BARS AT EACH EDGE TO BE EQUAL TO ONE HALF OF AREA OF INTERRUPTED BARS IN THE CORRESPONDING DIRECTION. PROVIDE A MINIMUM OF 1-#5 E.F.
 2. WHERE TOP EDGE OF OPENING IS LESS THAN 2'-6" FROM TOP OF WALL ADD 1-#7 E.F. (IN LIEU OF #5) OVER OPENING. PROVIDE #4 L1 STIRRUPS @ 8" - EXTEND INTO SLAB WITH 2" COVER AT TOP OF STIRRUPS.
 3. AT UTILITY ACCESS OPENINGS WHICH ARE TO BE FILLED IN WITH CONCRETE, PROVIDE DOWELS PROJECTING 1'-0" INTO OPENING, EITHER EXTEND HORIZONTAL AND VERTICAL WALL REINFORCEMENT, OR ADD #4@12 E.F. DOWELS X2'-6" LONG.
 4. FOR ACTUAL OPENING SIZES AND LOCATIONS, SEE PLANS, SECTIONS, ARCHITECTURAL DWGS., AND MEP DWGS. SUBMIT SHOP DRAWINGS WITH WALL ELEVATIONS SHOWING ALL OPENINGS AND REINFORCEMENT.
 5. PROVIDE FOOTING OR CONCRETE MUD SLAB TO SUPPORT WALL FORMS AND WET CONCRETE. SEE FOUNDATION SECTIONS ON FS-300 SERIES DRAWINGS FOR ADDITIONAL DETAILS.



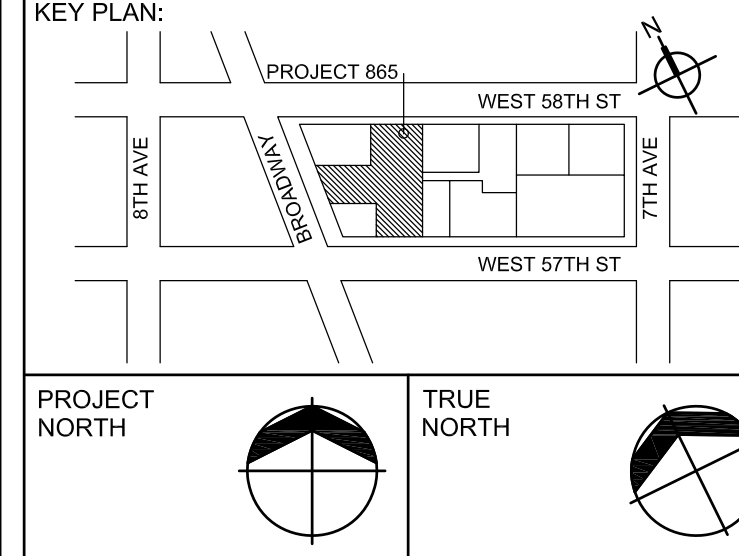
HORIZONTAL SECTION SHOWING PLACEMENT OF FOUNDATION WALL REINFORCEMENT

NOTE:
VERTICAL CONSTRUCTION JOINT IN WALL IS NOT SHOWN HERE - SEE TYPICAL CONSTRUCTION JOINT DETAIL.



PLAN VIEW OF JOINT
ALTERNATIVE-POUR GAP
VERTICAL CONSTRUCTION JOINT IN FOUNDATION WALL

- NOTES:**
1. CONSTRUCTION JOINTS IN WALLS SHALL BE LOCATED AT LEAST FOUR FEET FROM FACE OF SUPPORTING PIER, FOOTING, PILE CAP, ETC. OR FROM WALL OPENING.
 2. MAXIMUM SPACING BETWEEN JOINTS SHALL BE FORTY FEET UNLESS NOTED OTHERWISE ON THE FOUNDATION DRAWINGS.
 3. CONCRETE SHALL NOT BE PLACED IN THE POUR GAP UNTIL 24 HOURS AFTER PLACEMENT OF THE MOST RECENT ADJACENT SECTION.
 4. FOR JOINTS IN SHEARWALLS SEE DETAILS IN FS-400 OR S-400 SERIES.



DEVELOPER:
EXTELL DEVELOPMENT COMPANY
805 THIRD AVENUE, 7TH FLOOR
New York, NY 10022 USA
TEL: 212-712-4000 FAX: 212-712-4100

ARCHITECT OF RECORD: Base Building Shell & Core
AAI ARCHITECTS, P.C.
401 Wellington St. W., 3rd Floor
Toronto, ON M5V 1E7 Canada
TEL: 416-967-1500 FAX: 416-967-7150

STRUCTURAL ENGINEERS:
WSP CANTOR SEINUK
225 EAST 48th Street
New York, NY 10017 USA
TEL: 212-687-9888 FAX: 646-487-5501

MEP ENGINEERS:
AKF GROUP
1501 Broadway
New York, NY 10036 USA
TEL: 212-354-8556 FAX: 212-354-5668

GEOTECHNICAL ENGINEERS:
Langan Engineering & Environmental Services
21 Penn Plaza - 360 West 31st Street, 8th Floor
New York, NY 10001-2727
TEL: 212-479-5400 FAX: 212-479-5444

CODE CONSULTANTS:
Construction Consulting Associates
100 Church Street
New York, NY 10007
TEL: 212-385-1818 FAX: 212-385-1911

No.	DESCRIPTION:	DATE:
00	D.O.B. SUBMISSION	11 OCT. 2012
01	D.O.B. SUBMISSION	23 JAN. 2013

D.O.B. SUBMISSION

Discrepancies must be reported immediately to the Architect before proceeding. Only figured dimensions are to be used. Contractors must check all dimensions on site. This drawing is protected by copyright.

ALL DIMENSIONS ARE SHOWN IN IMPERIAL.

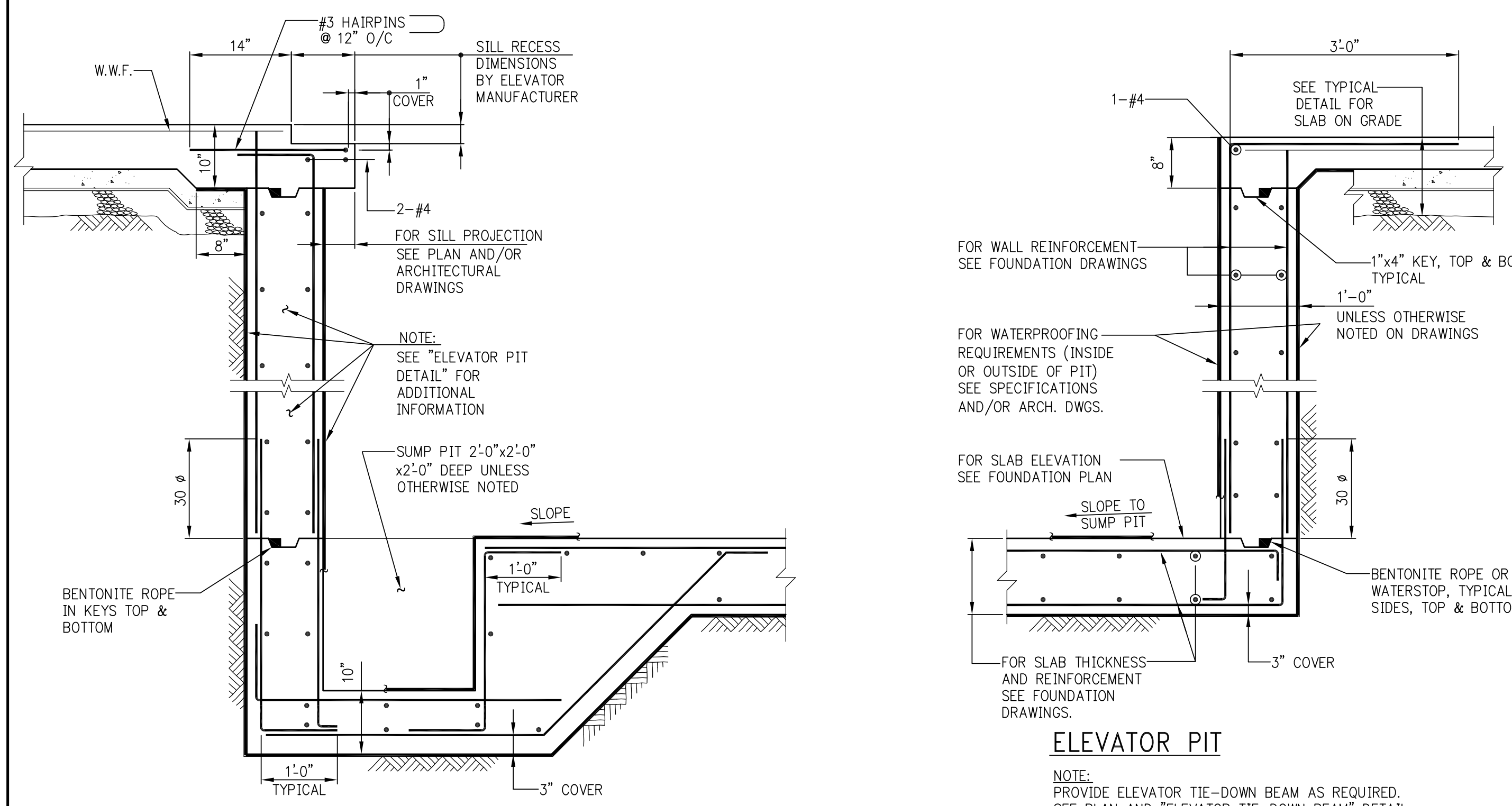
CONSULTANT:
WSP CANTOR SEINUK
STRUCTURAL ENGINEERS
1501 Broadway
New York, NY 10036 USA
TEL: 212-687-9888 FAX: 646-487-5501

PROJECT:
217 WEST 57TH STREET
NEW YORK, NY

DRAWING TITLE:
TYPICAL CONCRETE DETAILS 1

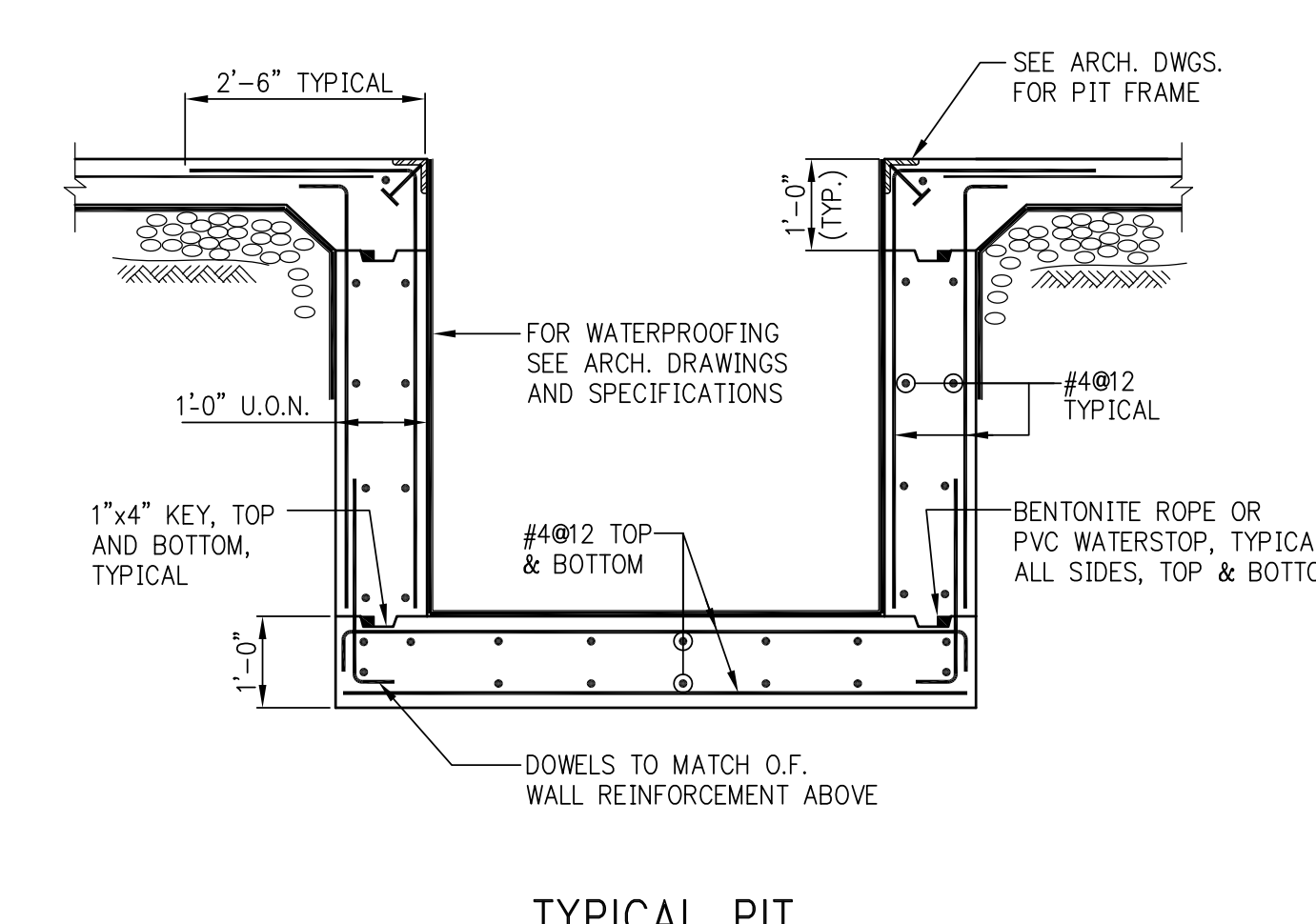
SEAL & SIGNATURE:
DATE: 11 OCT. 2012
PROJECT No: 2012133
DRAWN: CAD REV: 3 OF 10
CHK: B.S. SCALE: 3/8" = 1'-0"
DWG No: 2012133-01
DOB EMPLOYEE NAME: DOB PAGE No: DOB B-SCAN:

Buildings
APPROVED
Under Directive 2 of 1975
Date/Time: Mar 10, 2014 - 10:17 AM
NYC Development Hub

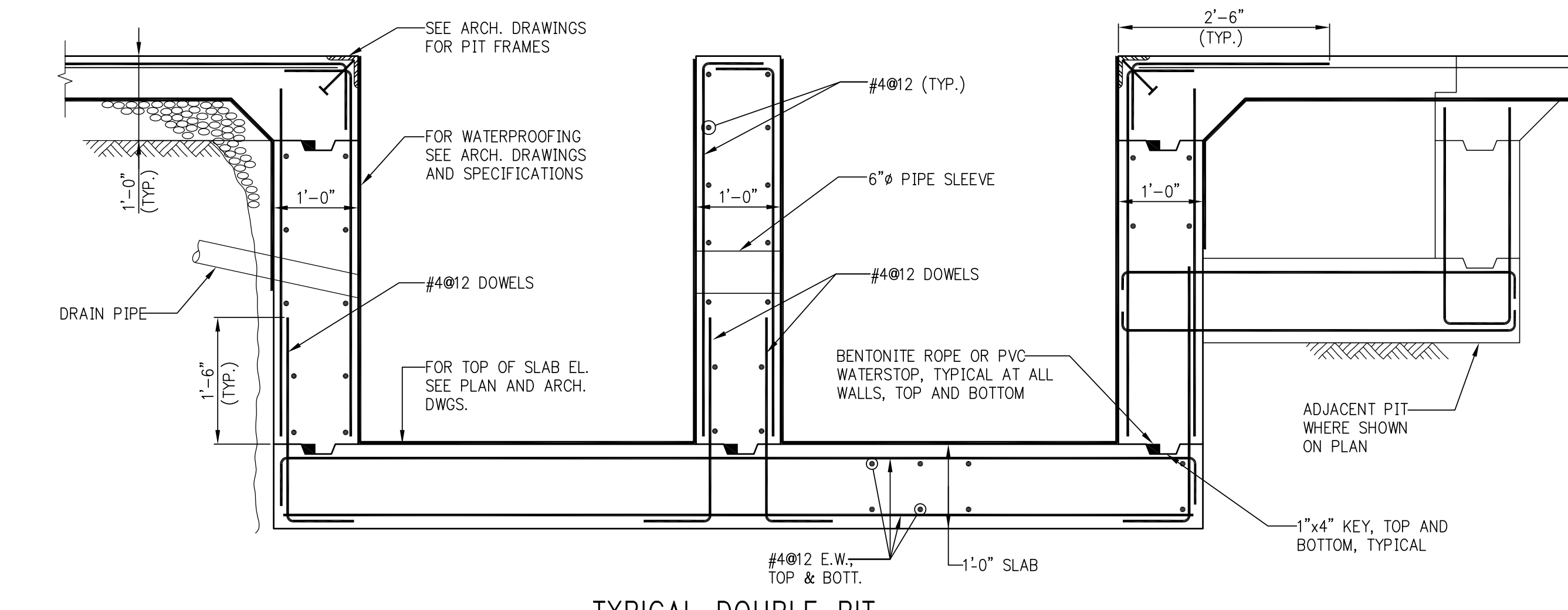


ELEVATOR PIT SILL AND SUMP PIT

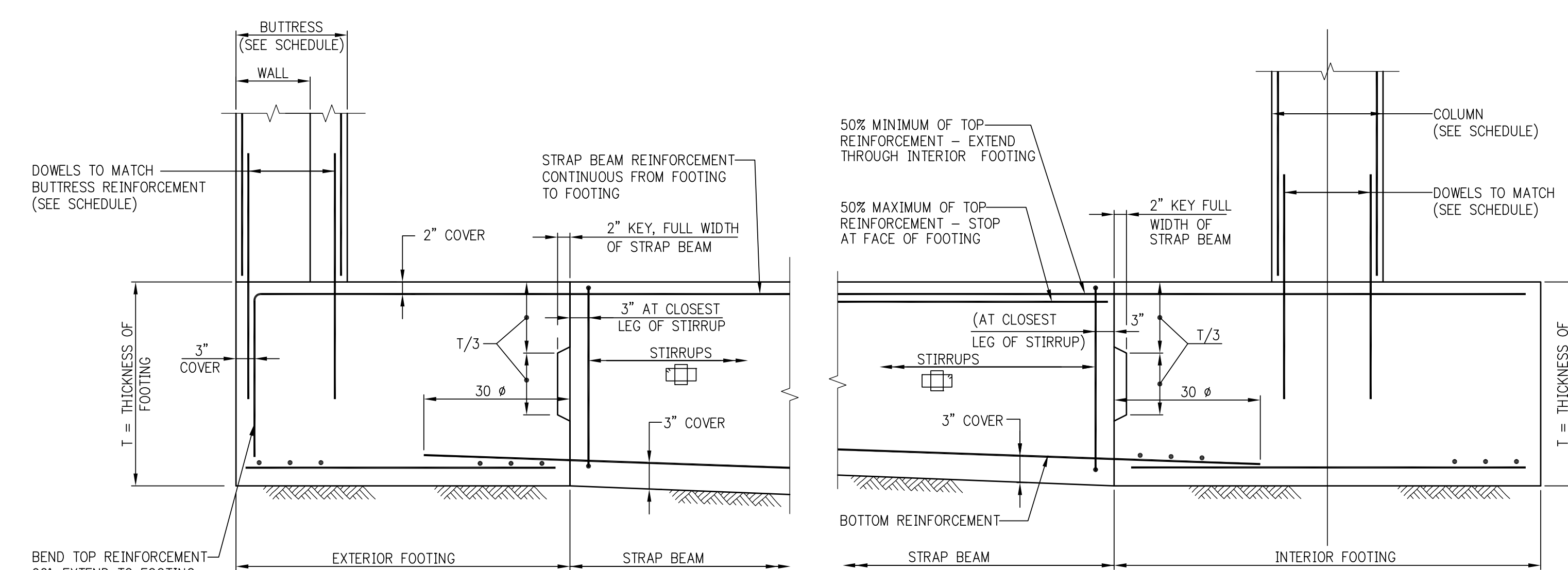
ELEVATOR PIT



TYPICAL PIT



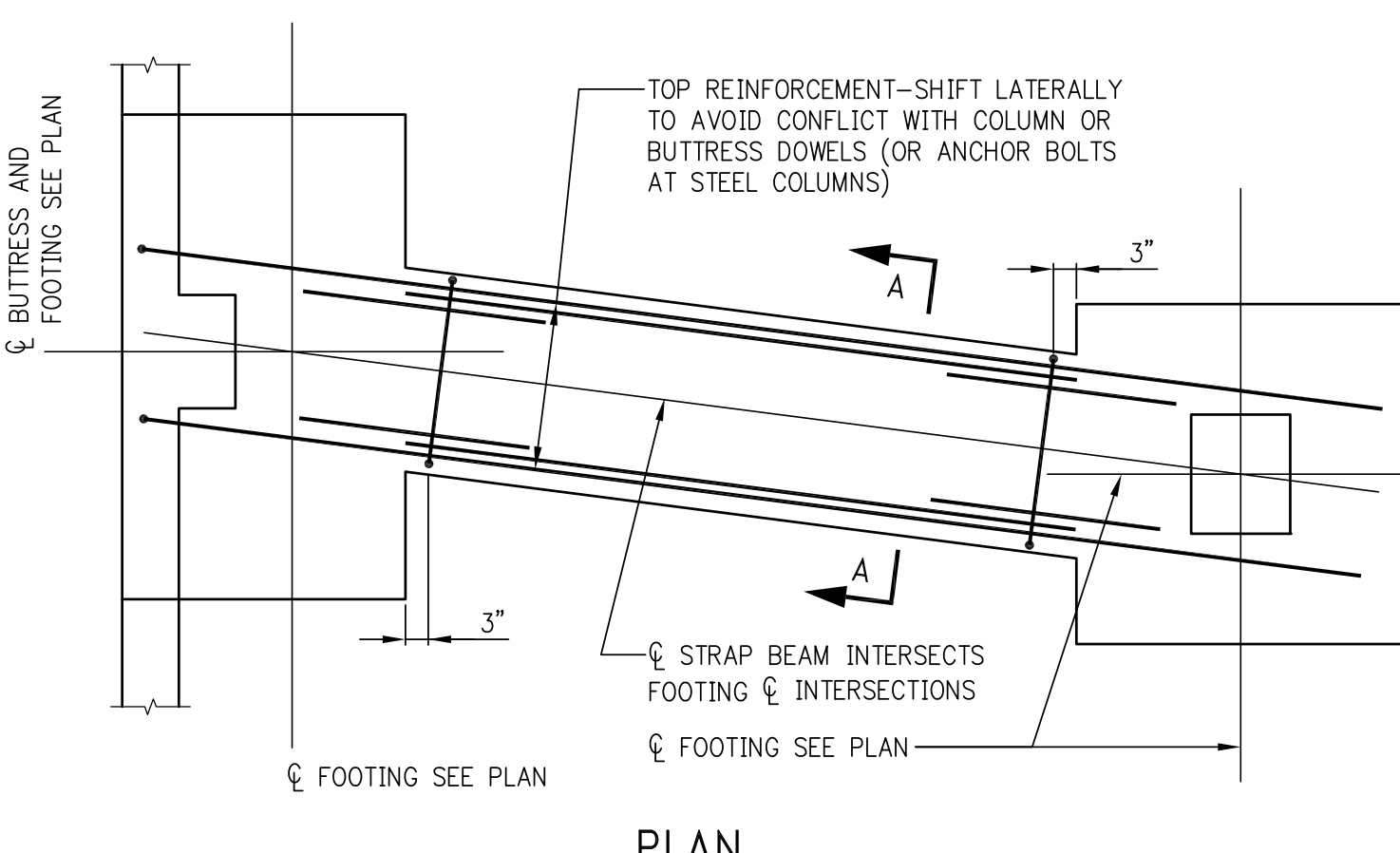
TYPICAL DOUBLE PIT



ELEVATION - EXTERIOR FOOTING

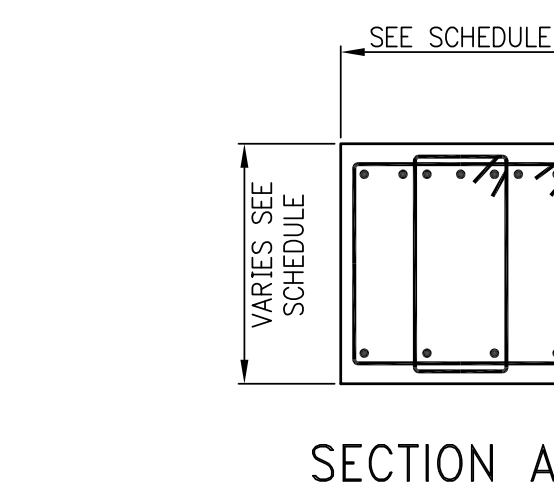
ELEVATION - INTERIOR FOOTING

NOTE:
SEE FOUNDATION DRAWINGS FOR STRAP BEAM SIZE, REINFORCEMENT, AND STIRRUPS.

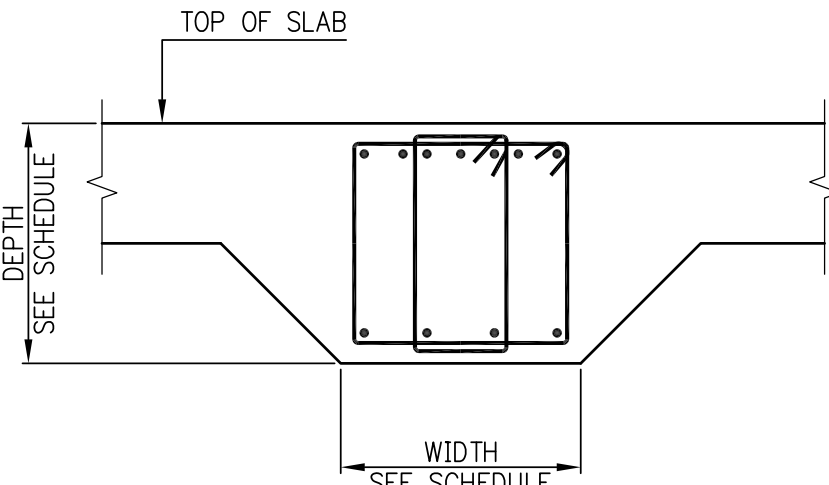


STRAP BEAM FOR FOOTINGS ON SOIL OR ROCK

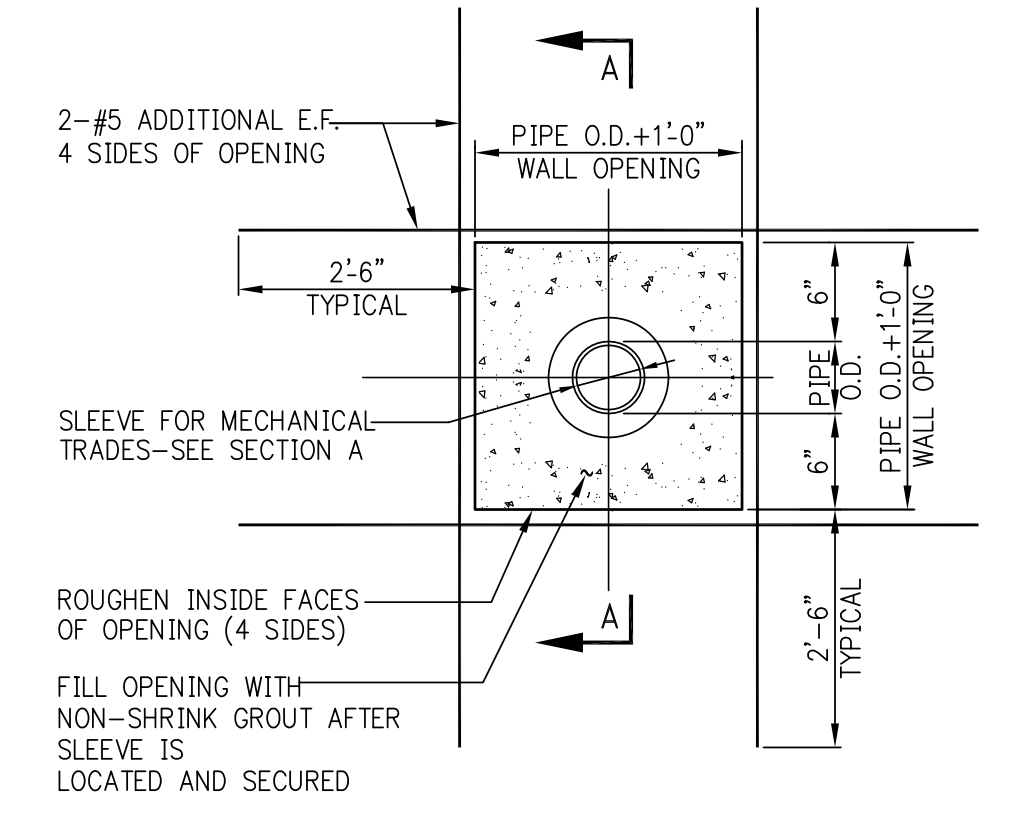
NOTE:
STRAP BEAM MUST FRAME DIRECTLY TO FOOTINGS. STRAP BEAMS MAY NOT FRAME TO PIERS OR BUTTRESSES.



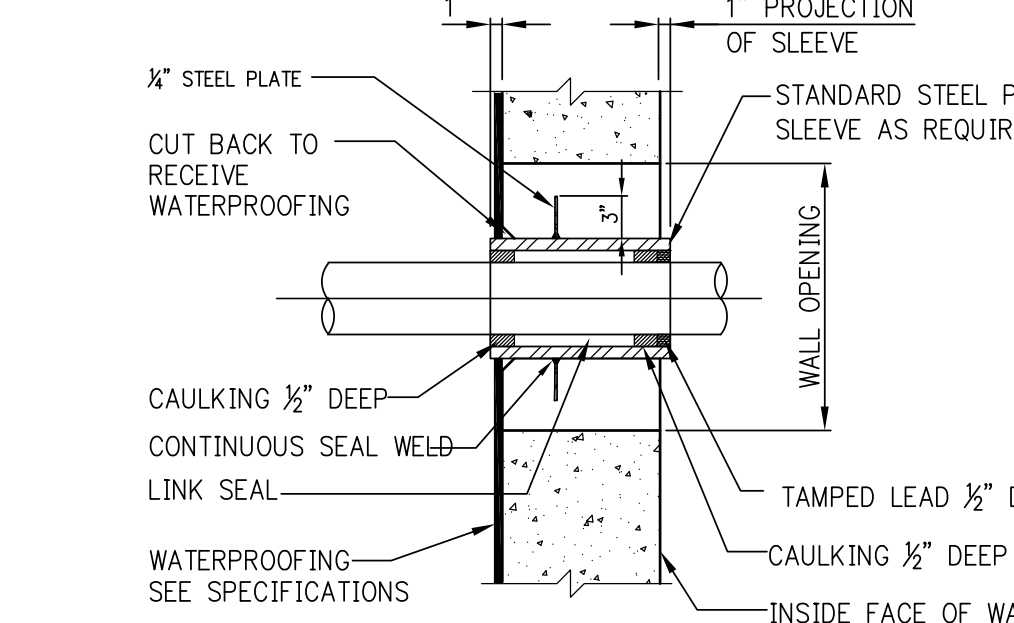
SECTION A-A



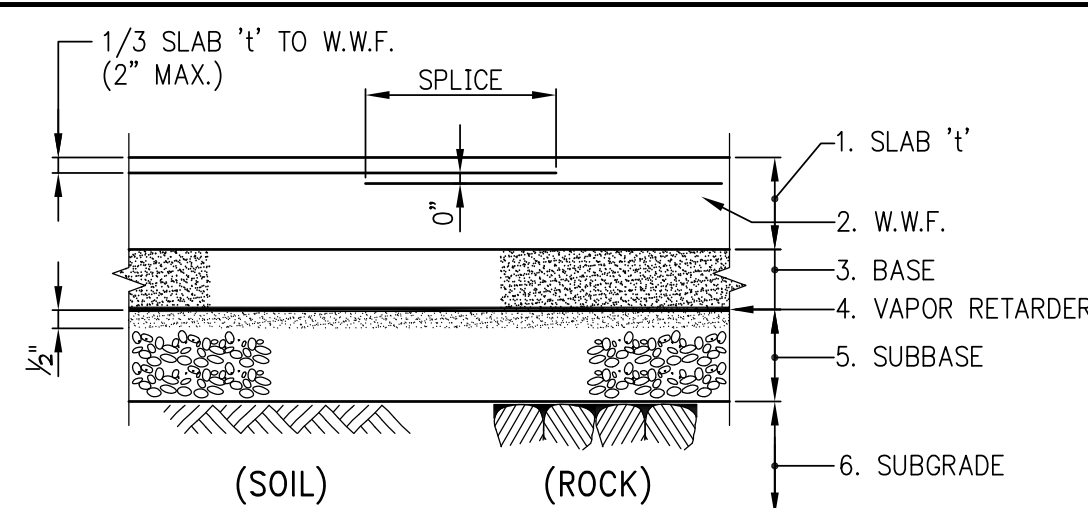
ALTERNATIVE SECTION A-A (AT STRAP BEAM MONOLITHIC WITH SLAB)



BOX-OUT OPENING THROUGH FOUNDATION WALL



WATERPROOFED SLEEVE THROUGH WALL WITH WATERPROOFING

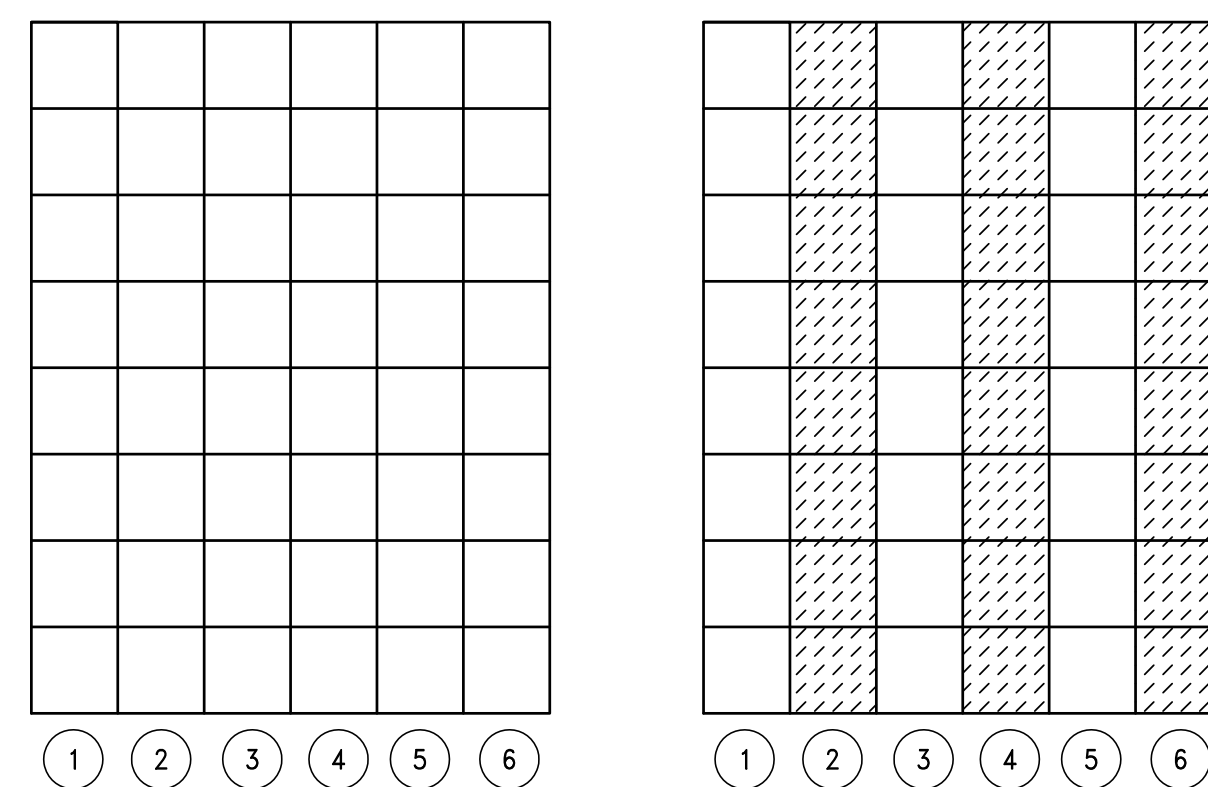


TYPICAL DETAIL - SLAB ON GROUND

NOTES:

1. SLAB THICKNESS 1'-0\"/>
2. W.W.F. REINFORCEMENT: SEE TABLE
3. BASE = 3\"/>
4. VAPOR RETARDER (VAPOR "BARRIER"): 10 MILS THICK POLYETHYLENE.
5. SLAB BASE: 4\"/>
6. SUBGRADE: COMPACTED FILL, BACKFILL OR UNDISTURBED SOIL, OR LEVELED ROCK SURFACE.

SLAB '1'	SLAB REINFORCEMENT (UNLESS OTHERWISE NOTED) W.W.F.
5"	6 x 6 - W2.1 x W2.1
6"-7"	6 x 6 - W2.9 x W2.9
8"-9"	6 x 6 - W4.0 x W4.0
10" OR MORE	REBAR PER DRAWINGS



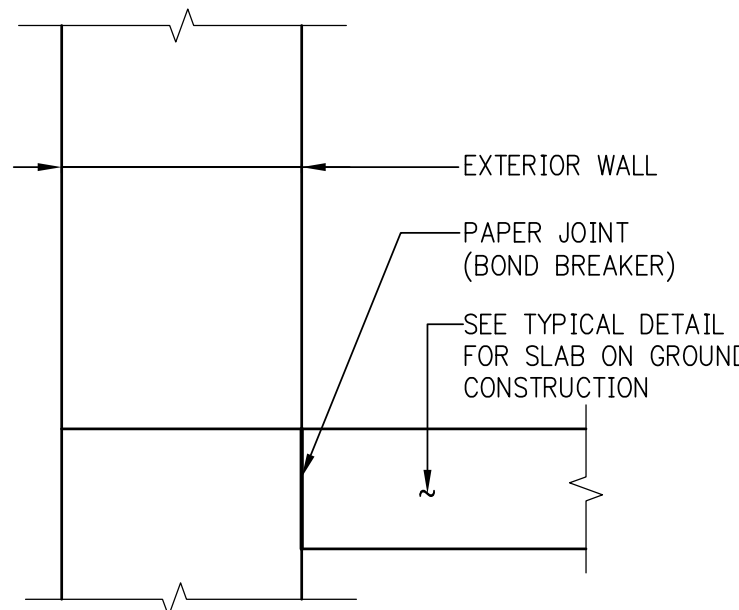
SUGGESTED SEQUENCE OF CASTING STRIPS

SLAB ON GROUND NOTES:

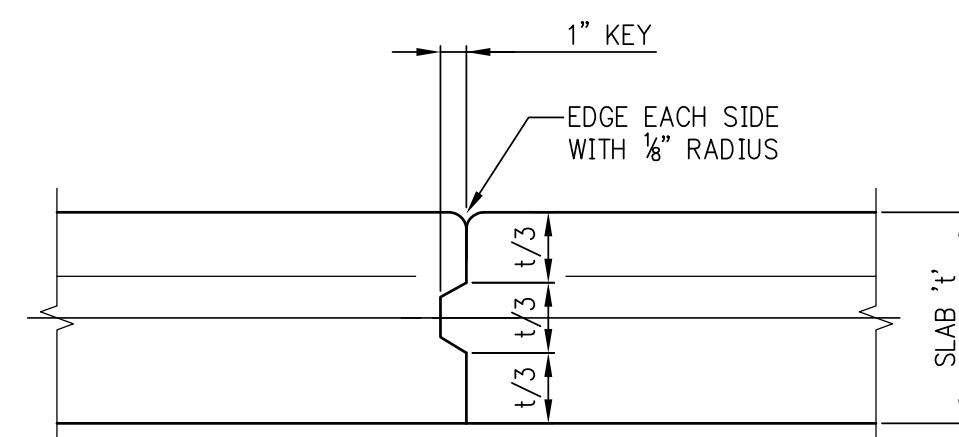
1. SLAB ON GROUND SHALL BE PLACED IN STRIPS, AS SHOWN IN "SUGGESTED SEQUENCE OF CASTING STRIPS"
2. CONTROL JOINTS SHALL BE SAWCUT AS SOON AS CONCRETE IS HARD ENOUGH NOT TO BE TORN OR DAMAGED BY THE BLADE, AND BEFORE THE CONCRETE STARTS TO COOL. TYPICALLY JOINTS SHOULD BE CUT 4 TO 12 HOURS AFTER THE SLAB HAS BEEN FINISHED, DEPENDING UPON WEATHER AND JOB CONDITIONS.
3. SPACING OF SAWCUT CONTROL JOINTS (IN FEET) TO BE APPROXIMATELY THREE TIMES THE SLAB THICKNESS IN INCHES, WITH A MAXIMUM OF TWENTY (20) FEET.
4. A MAXIMUM RATIO OF 1:5 SHALL BE MAINTAINED BETWEEN LONG AND SHORT DIMENSIONS OF PANELS FORMED BY CONSTRUCTION AND CONTROL JOINTS.

LEGEND:

- STRIPS CAST FIRST
- INFILL STRIPS
- FORMED JOINTS
- SAWCUT JOINTS

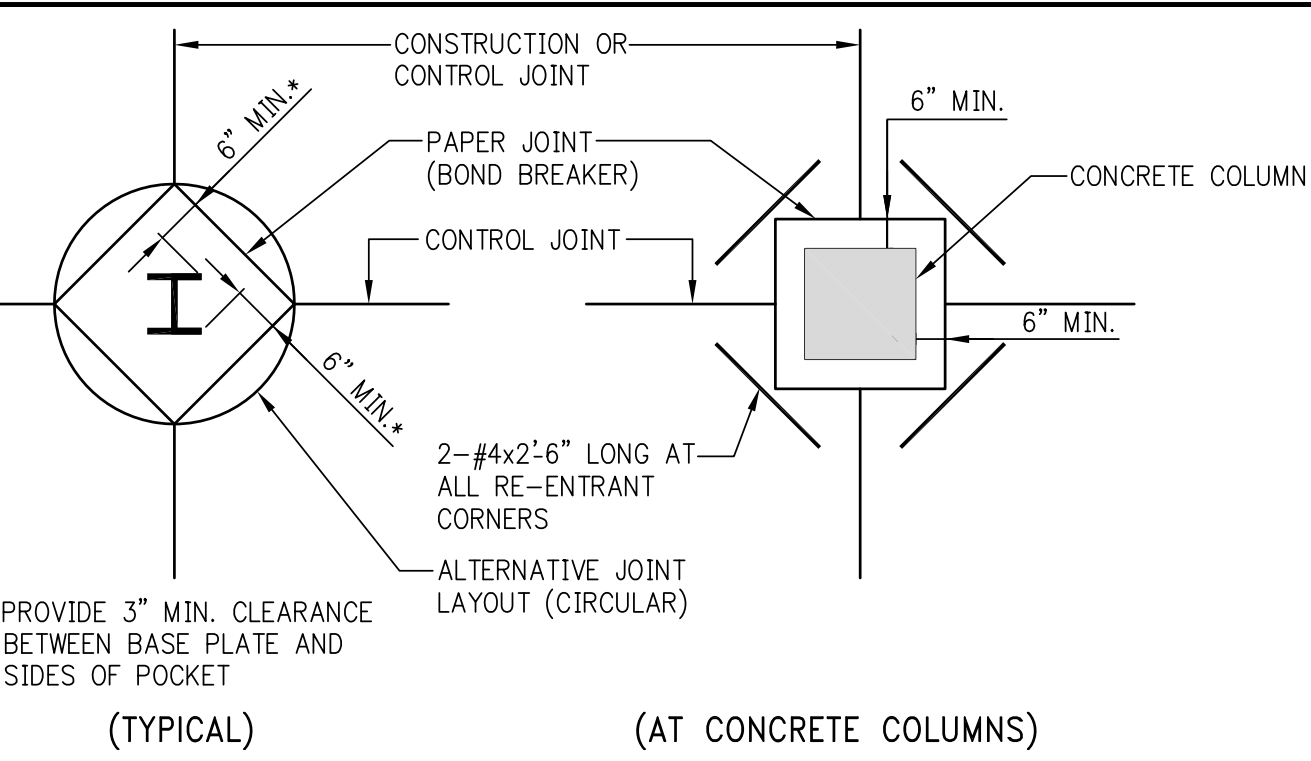


ISOLATION JOINT AT PERIMETER WALL

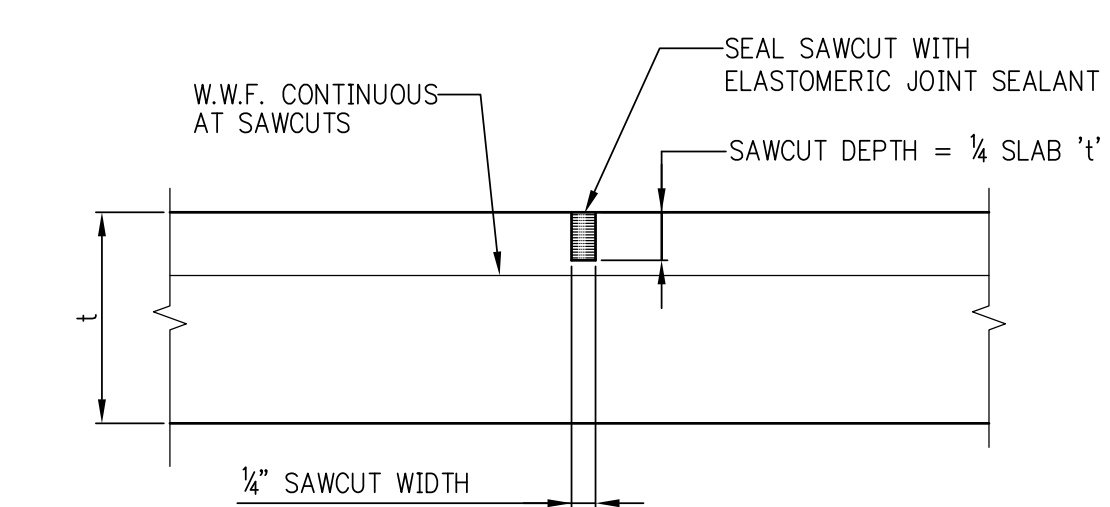


CONSTRUCTION JOINT

SLAB ON GROUND

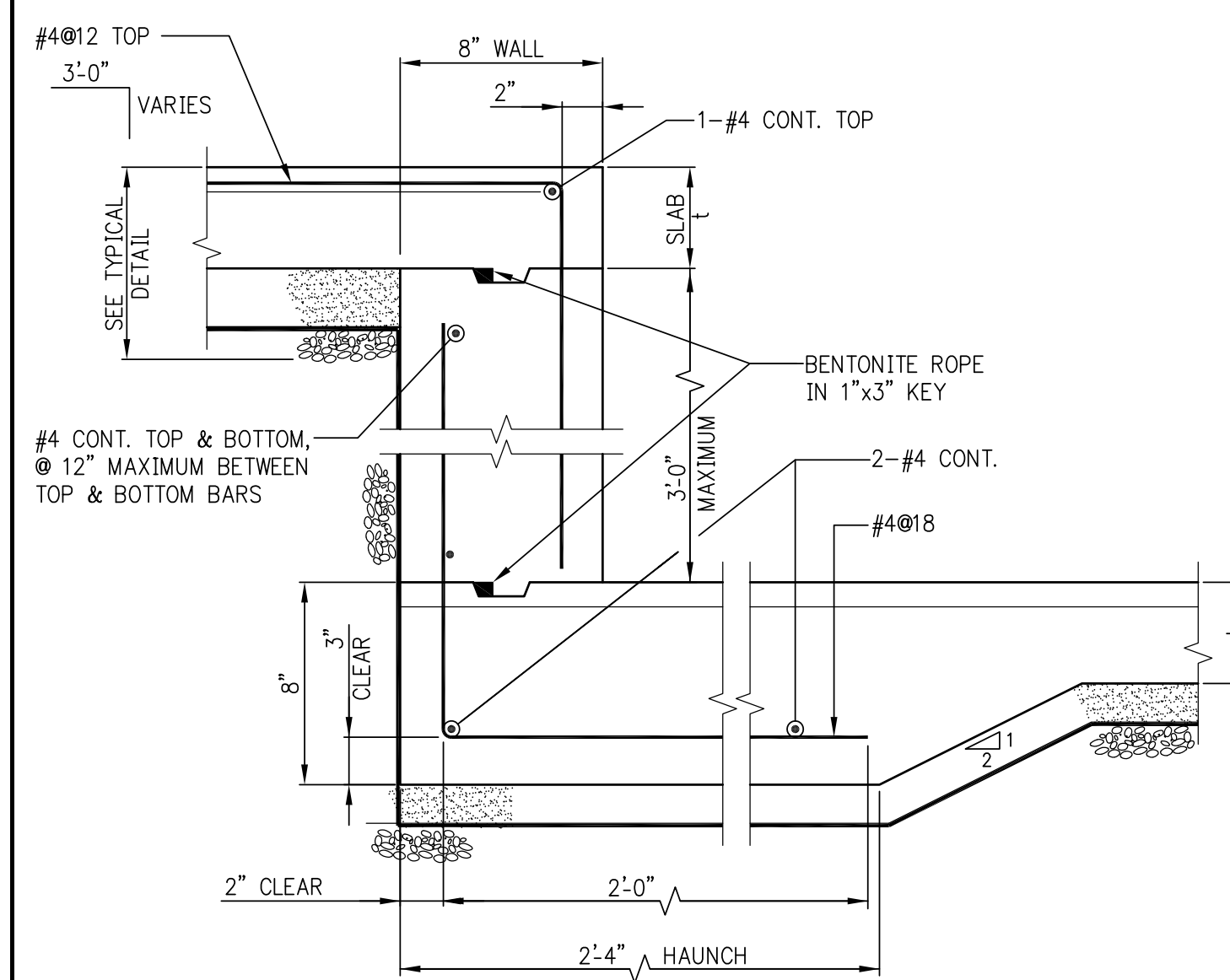
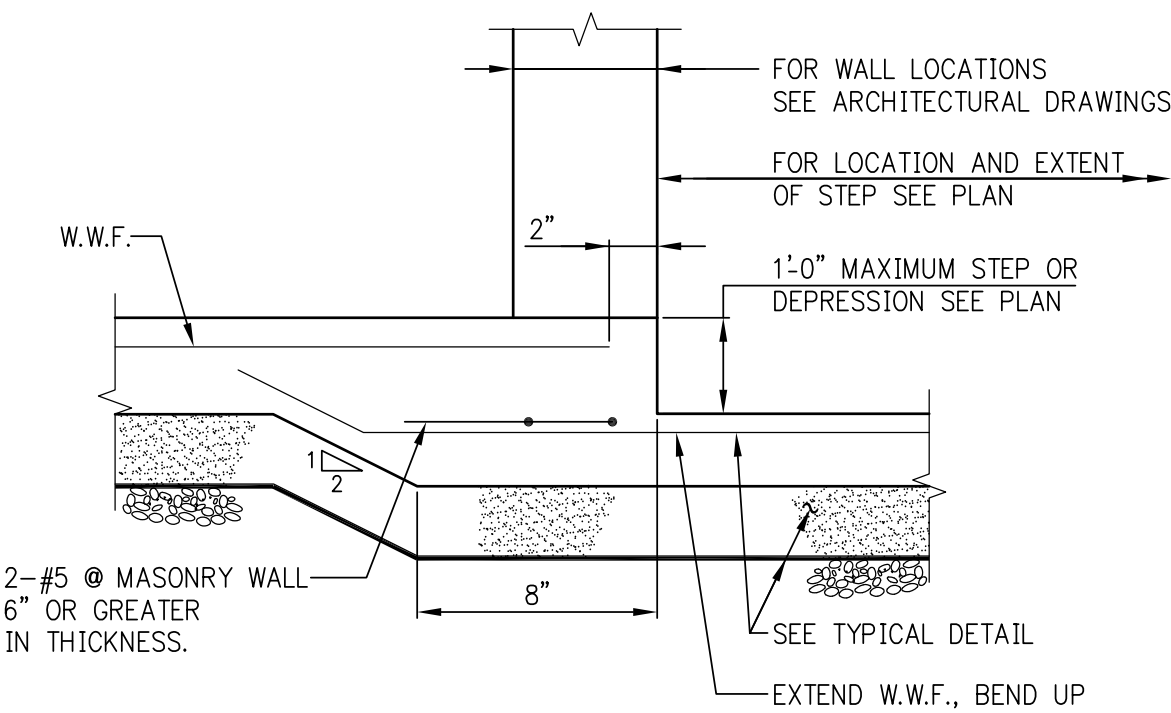
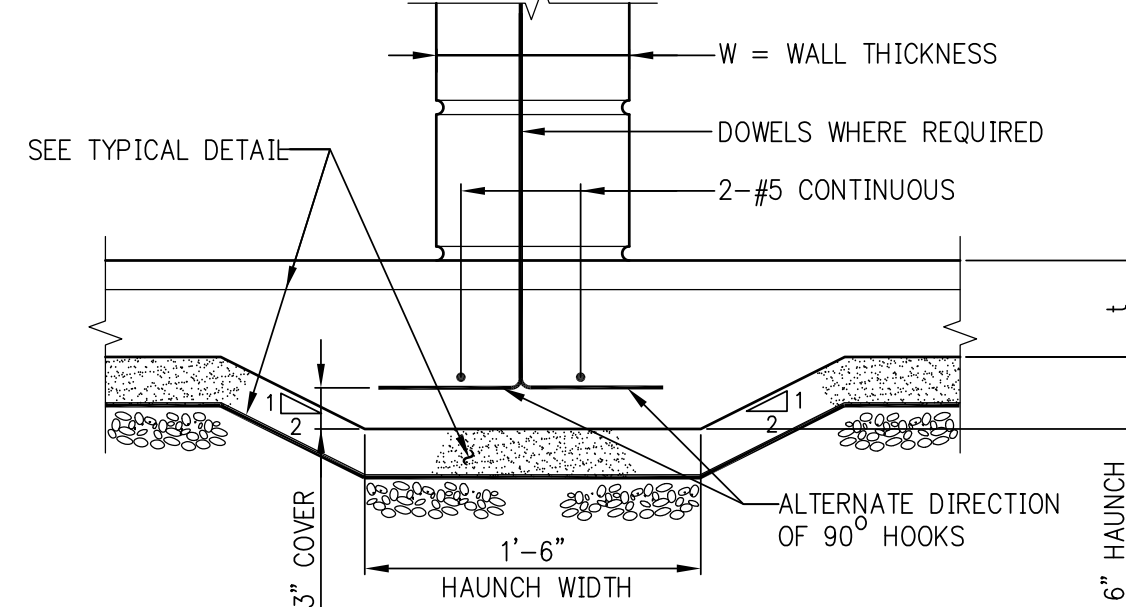
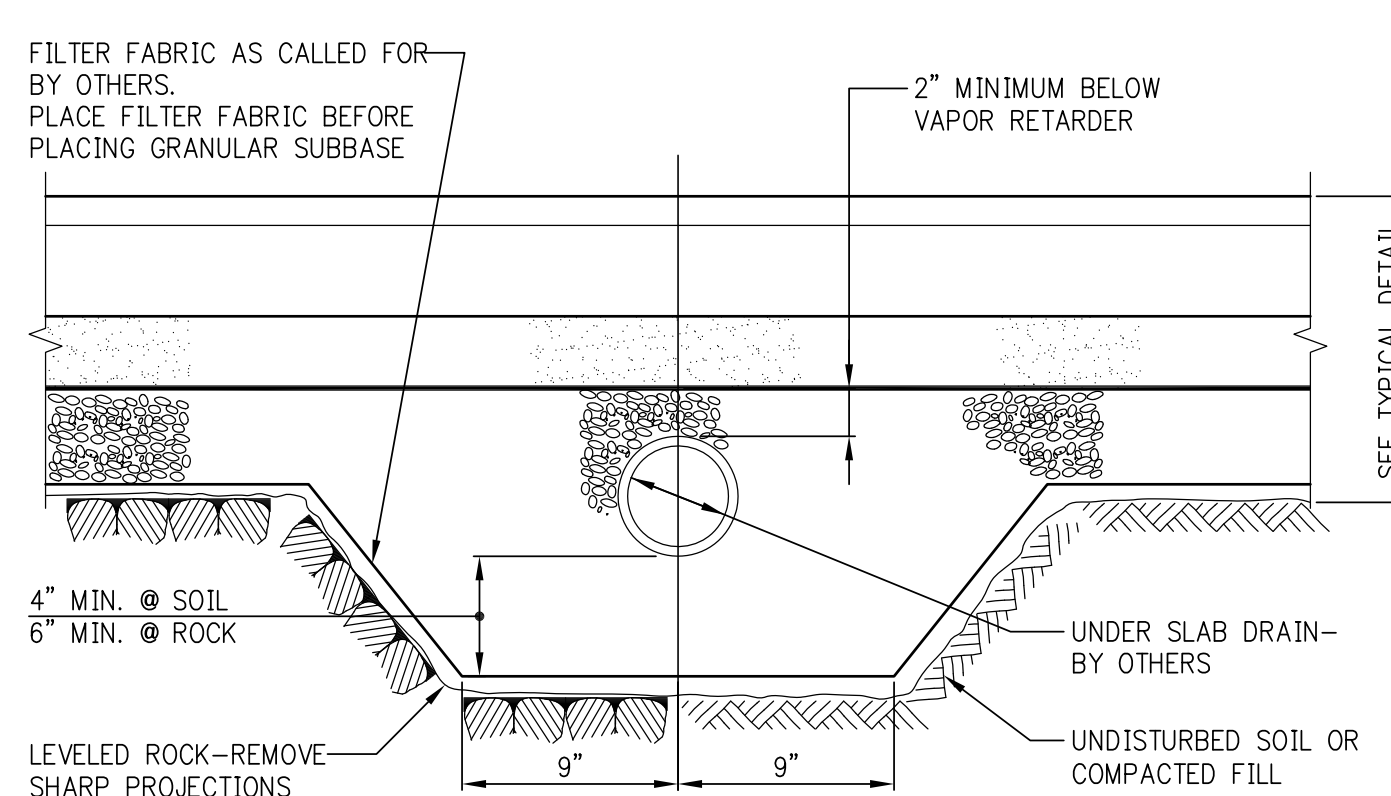


CONTROL JOINT LAYOUT AT COLUMNS



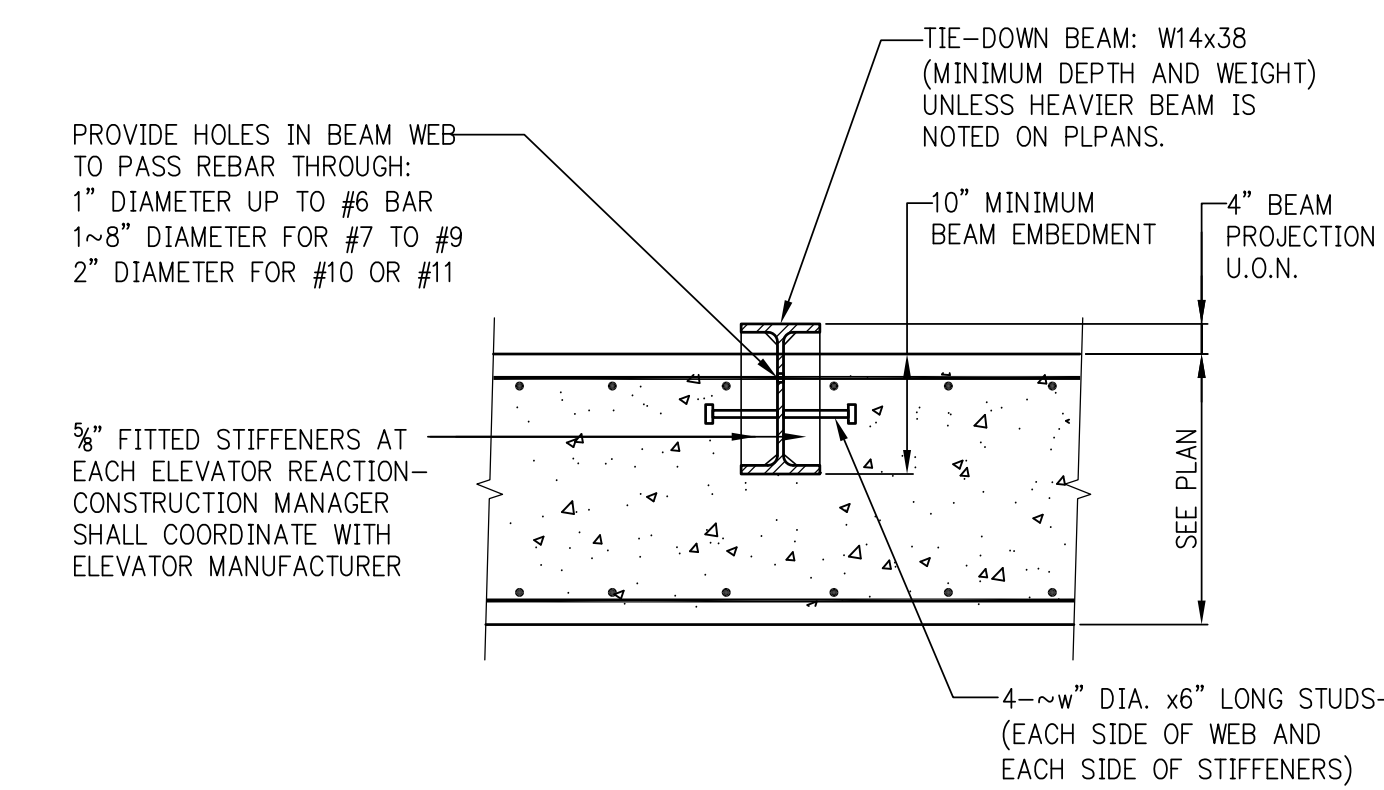
SAWCUT CONTROL JOINT

JOINT DETAILS

SLAB ON GROUND STEP OR DEPRESSION
GREATER THAN 1'-0"SLAB ON GROUND STEP OR DEPRESSION
1'-0" OR LESSTHICKENED SLAB AT MASONRY
WALLS 6" THICK OR GREATER

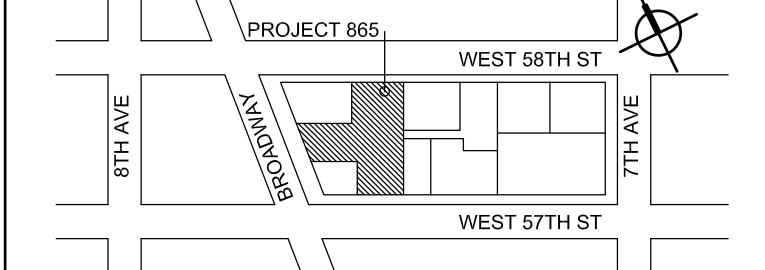
UNDER SLAB DRAIN

NOTE:
THIS DETAIL IS INTENDED SOLELY TO SHOW TRENCHING IN
SUBGRADE WHERE DRAINS ARE CALLED FOR BY OTHERS.



ELEVATOR TIE-DOWN BEAM

KEY PLAN:



PROJECT NORTH

TRUE NORTH

PROJECT NORTH

DEVELOPER:

EXTELL DEVELOPMENT COMPANY
805 THIRD AVENUE, 7TH FLOOR
New York, NY 10022 USA
TEL: 212-712-4000 FAX: 212-712-4100

ARCHITECT OF RECORD: Base Building Shell & Core

AAI ARCHITECTS, P.C.
401 Wellington St. W., 3rd Floor
Toronto, ON M5V 1E7 Canada
TEL: 416-967-1500 FAX: 416-967-7150

STRUCTURAL ENGINEERS:

WSP CANTOR SEINUK
225 EAST 49th Street
New York, NY 10017 USA
TEL: 212-687-9888 FAX: 646-487-5501

MEP ENGINEERS:

AKF GROUP
1501 Broadway
New York, NY 10036 USA
TEL: 212-354-6666 FAX: 212-354-6668

GEOTECHNICAL ENGINEERS:

Langan Engineering & Environmental Services
21 Penn Plaza - 360 West 31st Street, 8th Floor
New York, NY 10001-2127
TEL: 212-479-5400 FAX: 212-479-5444

CODE CONSULTANTS:

Construction Consulting Associates
100 Church Street
New York, NY 10007
TEL: 212-385-1818 FAX: 212-385-1911

No.	DESCRIPTION:	DATE:
00	D.O.B. SUBMISSION	11 OCT. 2012
01	D.O.B. SUBMISSION	23 JAN. 2013

D.O.B. SUBMISSION

Discrepancies must be reported immediately to the Architect before proceeding. Only figured dimensions are to be used. Contractors must check all dimensions on site. This drawing is protected by copyright.

ALL DIMENSIONS ARE SHOWN IN IMPERIAL.

CONSULTANT:

WSP CANTOR SEINUK
STRUCTURAL ENGINEERS
100 Church Street
New York, NY 10007
TEL: 212-687-9888 FAX: 646-487-5501 WWW.WSPCSE.COM

PROJECT:

217 WEST 57TH STREET
NEW YORK, NY

DRAWING TITLE:

TYPICAL CONCRETE
DETAILS 2

SEAL & SIGNATURE: DATE: PROJECT No: 2012133

DRAWN: CAD REV: CHK: B.S. SCALE: 3/8" = 1'-0"

DWG No: DOB PAGE No: 4 OF 10

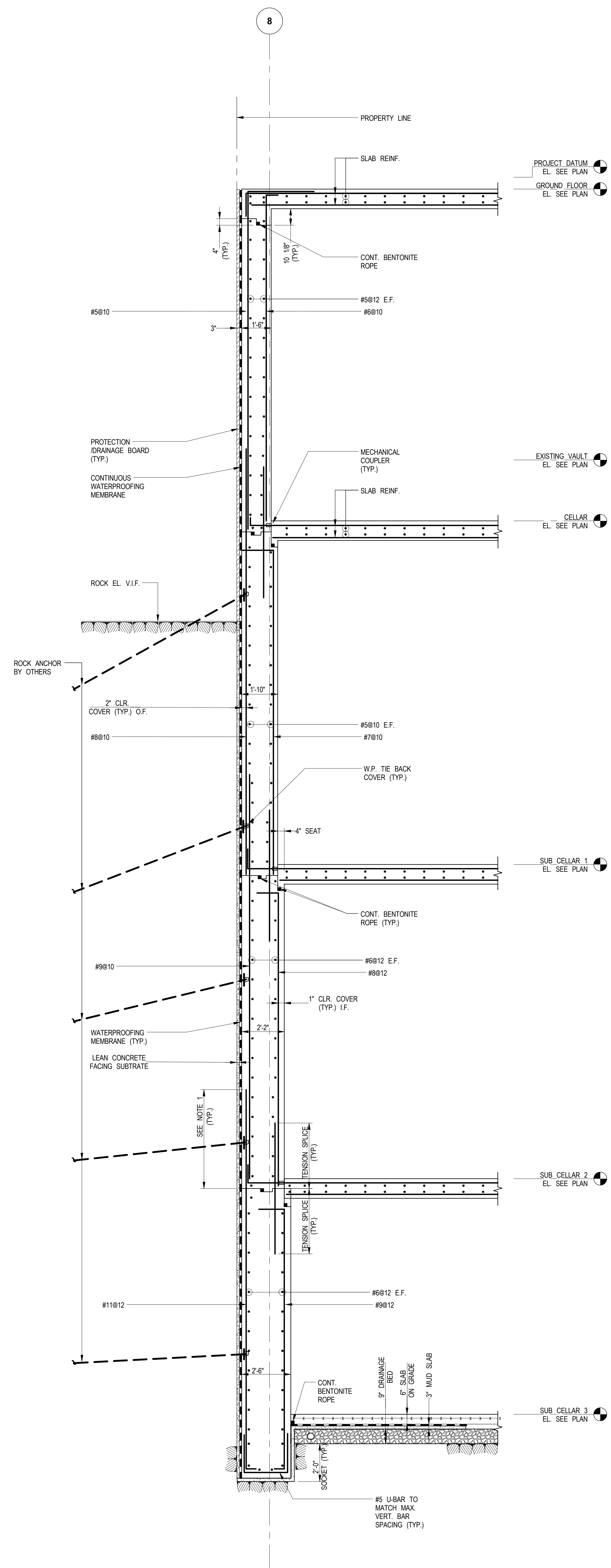
DOB EMPLOYEE STAMP: DOB B-SCAN:

Demian F. 201.00

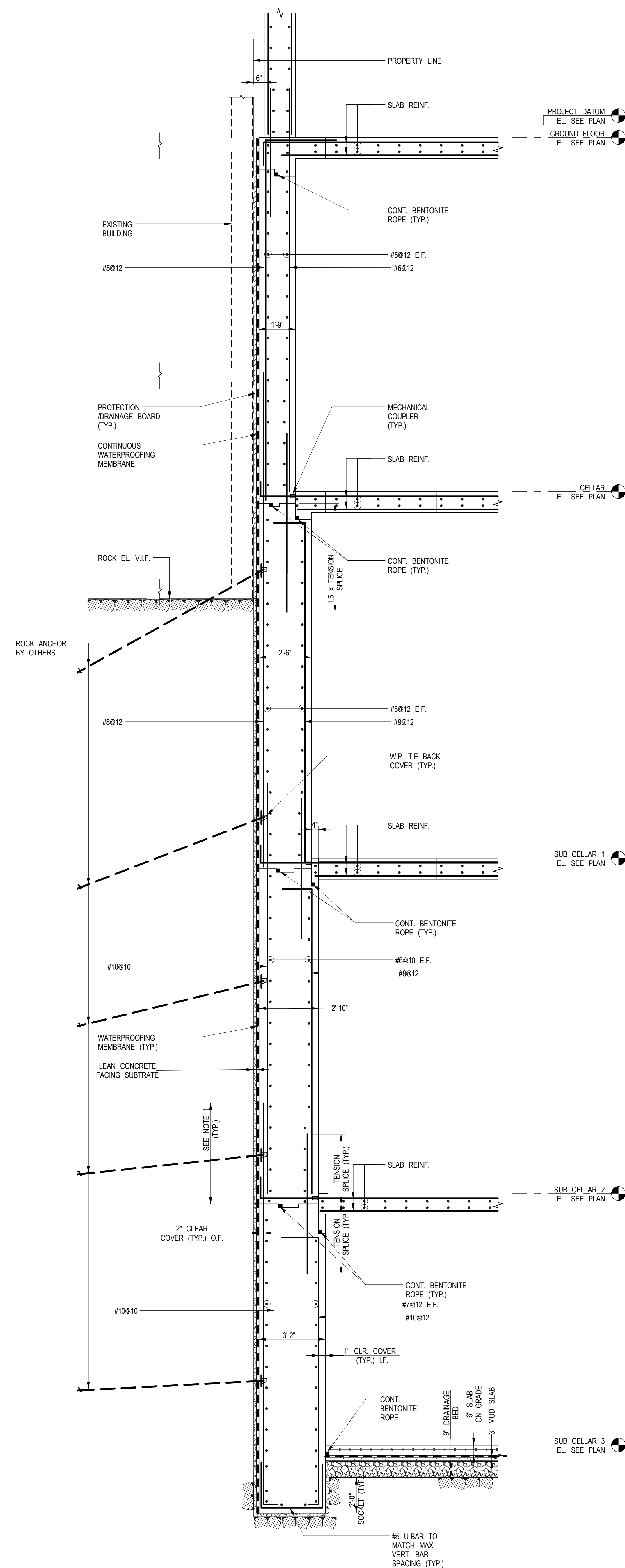
APPROVED Under Directive 2 of 1575

Date/Time: Mar 10, 2014 - 10:17 AM

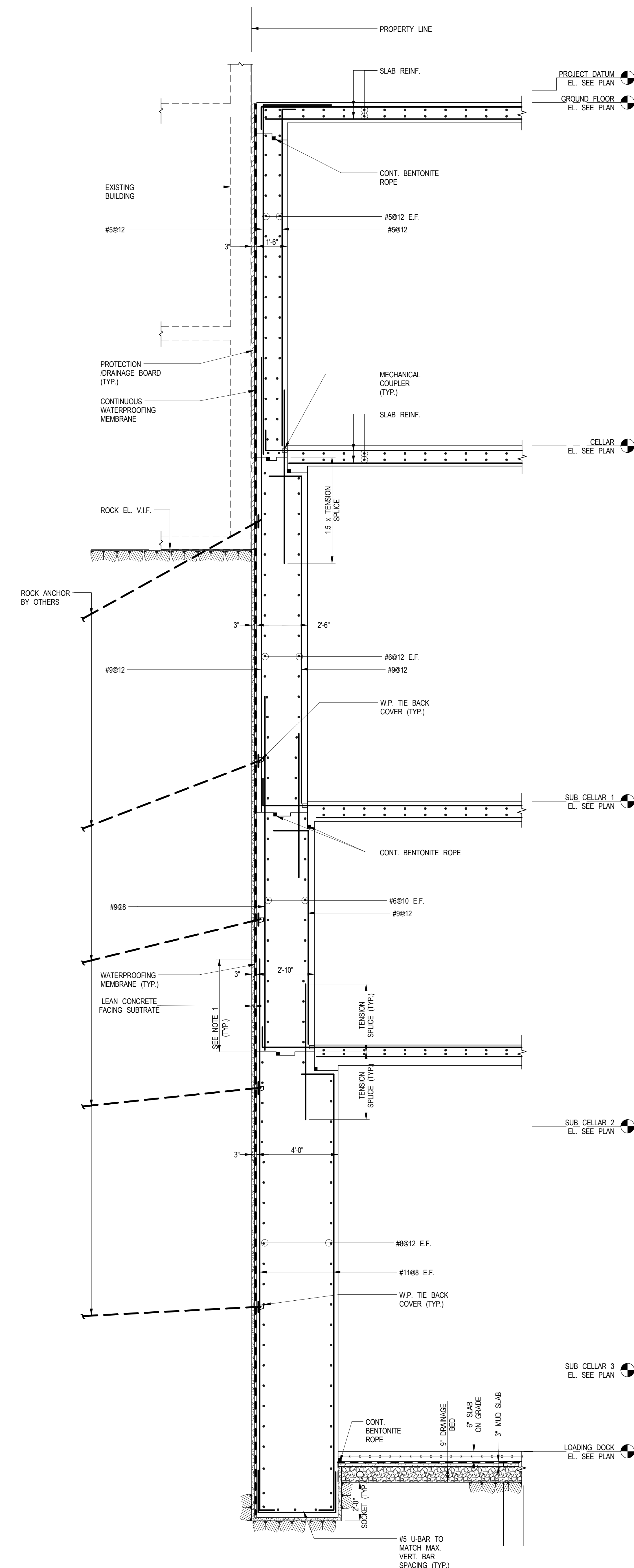
NYC Development Hub



1 SECTION
FO-300 SCALE: 3/8" = 1'-0"

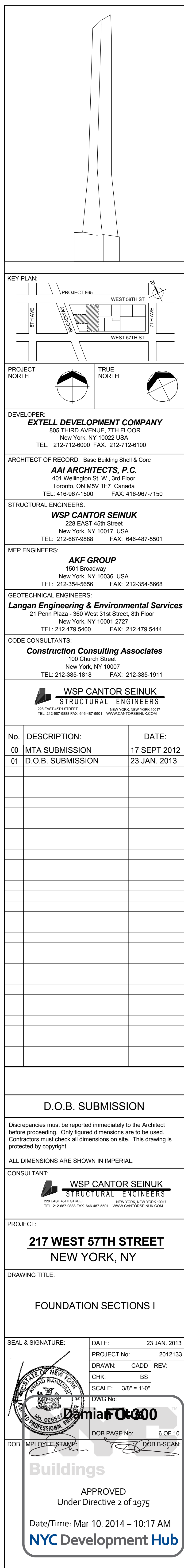


2 SECTION
FO-300 SCALE: 3/8" = 1'-0"



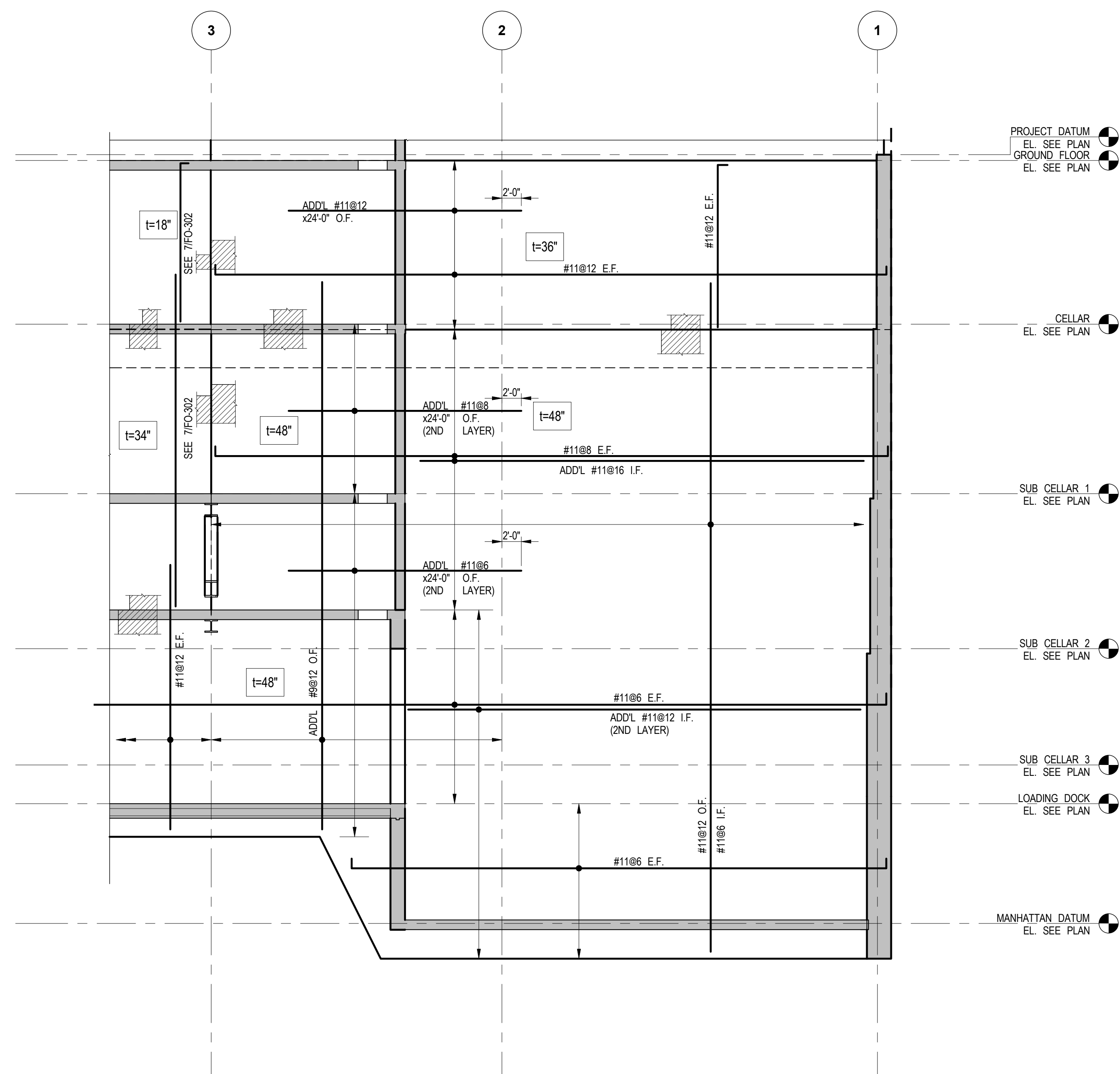
3 SECTION
FO-300 SCALE: 3/8" = 1'-0"

- NOTES:
1. TENSION SPICES ON EXTERIOR WALL FACE SHALL EXTEND $0.3 \times (\text{FLOOR TO FLOOR HEIGHT})$
 2. SEE FO-202 FOR SPICE TABLES.
 3. SEE FO-001 FOR GENERAL NOTES AND LEGEND.
 4. FOR WATERPROOFING: HORIZONTAL APPLICATIONS: PREPRUFE 300R
VERTICAL APPLICATIONS: BLIND SIDE-PREPRUFE 160R
TWO-FACED WALL: BITUTHENE 4000

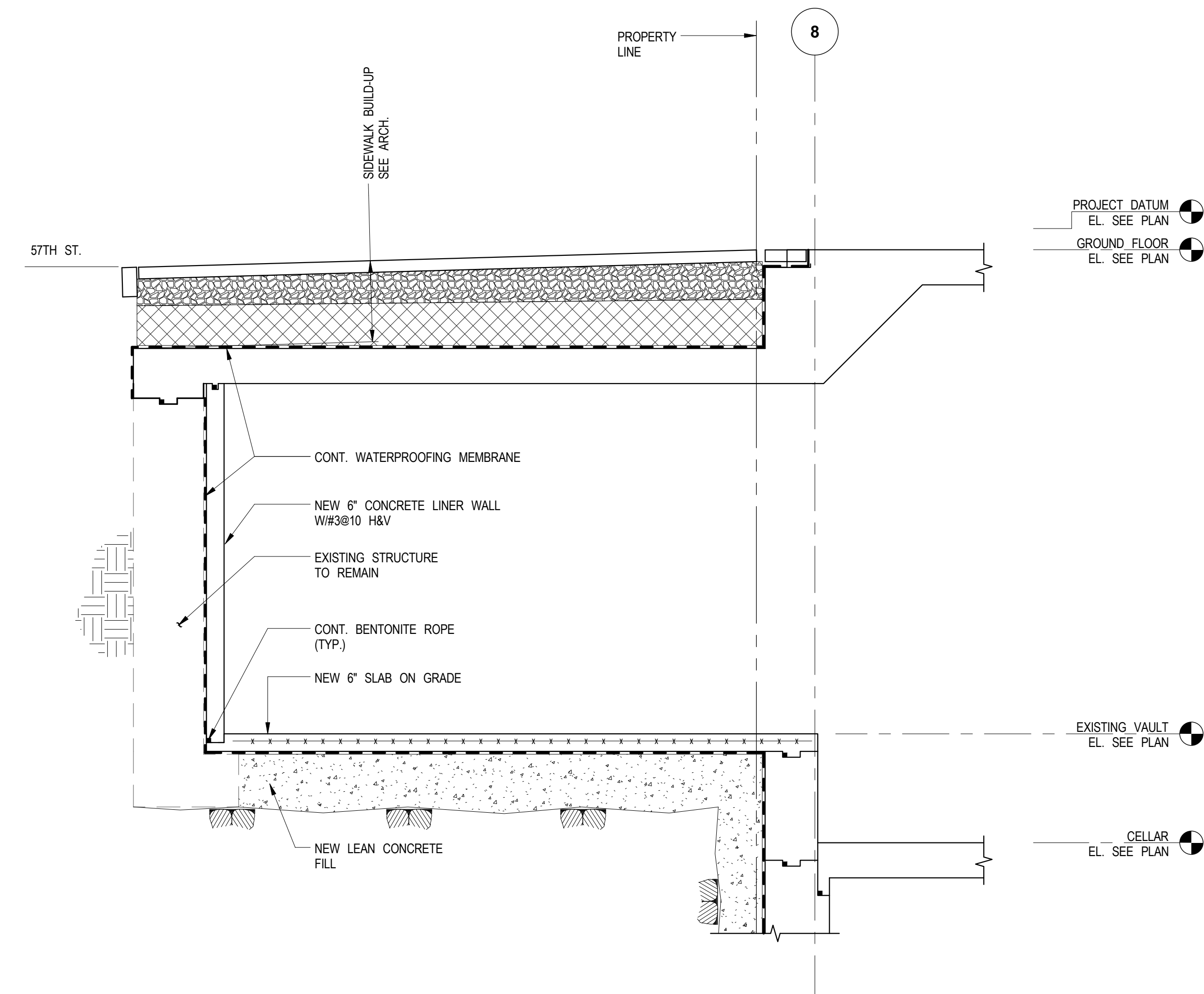




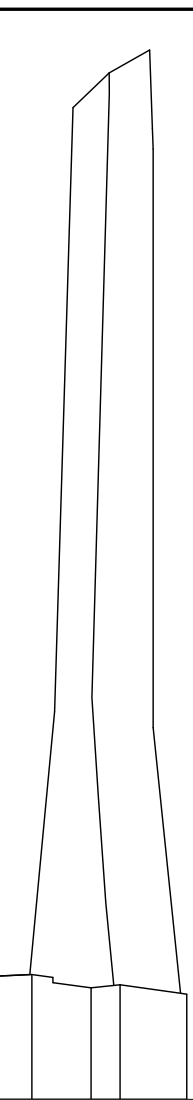
- NTC Development Hub



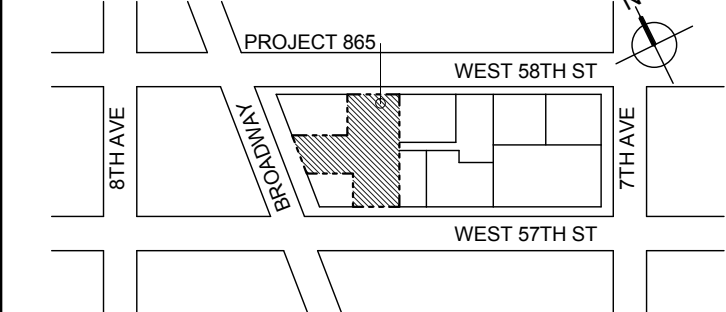
11 WEST FOUNDATION WALL ELEVATION
FO-303 SCALE: 1/8" = 1'-0"



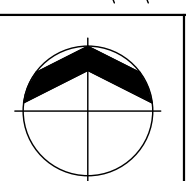
12 SECTION
FO-303 SCALE: 3/8" = 1'-0"



KEY PLAN



PROJEC



DEVELOP

EXTELL DEVELOPMENT COMPANY
805 THIRD AVENUE, 7TH FLOOR
New York, NY 10022 USA
TEL: 212-712-6000 FAX: 212-712-6100

ARCHITECT OF RECORD: Base Building Shell & Core
AAI ARCHITECTS, P.C.
401 Wellington St. W., 3rd Floor
Toronto, ON M5V 1E7 Canada
TEL: 416-967-1500 FAX: 416-967-7150

STRUCTURAL ENGINEERS:
WSP CANTOR SEINUK
228 EAST 45th Street
New York, NY 10017 USA
TEL: 212-687-9888 FAX: 646-487-5501

MEP ENGINEERS:

AKF GROUP
1501 Broadway
New York, NY 10036 USA
TEL: 212-354-5656 FAX: 212-354-5668

GEOTECHNICAL ENGINEERS:
Langan Engineering & Environmental Service
21 Penn Plaza - 360 West 31st Street, 8th Floor
New York, NY 10001-2727
TEL: 212.479.5400 FAX: 212.479.5444

CODE CONSULTANTS:
Construction Consulting Associates
100 Church Street
New York, NY 10007
TEL: 212-385-1818 FAX: 212-385-1911

 **WSP CANTOR SEINUK**
STRUCTURAL ENGINEERS
228 EAST 45TH STREET NEW YORK, NEW YORK 10017
TEL: (212) 693-6611 FAX: (212) 693-6666

[illegible]

D.O.B. SUBMISSION

Discrepancies must be reported immediately to the Architect before proceeding. Only figured dimensions are to be used. Contractors must check all dimensions on site. This drawing is protected by copyright.

ALL DIMENSIONS ARE SHOWN IN IMPERIAL.

CONSULT

 **WSP CANTOR SEINUK**
STRUCTURAL ENGINEERS
228 EAST 43RD STREET NEW YORK, NEW YORK 10017
TEL. 212-687-8800 FAX. 646-487-8501 WWW.CANTORSEINUK.COM

PROJECT

217 WEST 57TH STREET
NEW YORK, NY

DRAWING TITLE:

FOUNDATION WALL ELEVATIONS

SEAL & SIGNATURE:	DATE:	23 JAN, 20
-------------------	-------	------------

PROJECT No:	20121
-------------	-------

DRAWN:	CADD	REV:
--------	------	------

CHK:	BS
------	----

SCALE: As indicated

DWG N8:

Unit 3.00

DOB PAGE No: 9 OF 1

DOB B-SCA

qs

1991	1992	1993	1994	1995	1996	1997	1998	1999	2000	2001	2002	2003	2004	2005	2006	2007	2008	2009	2010	2011	2012	2013	2014	2015	2016	2017	2018	2019	2020	2021	2022	2023	2024	2025	2026	2027	2028	2029	2030	2031	2032	2033	2034	2035	2036	2037	2038	2039	2040	2041	2042	2043	2044	2045	2046	2047	2048	2049	2050	2051	2052	2053	2054	2055	2056	2057	2058	2059	2060	2061	2062	2063	2064	2065	2066	2067	2068	2069	2070	2071	2072	2073	2074	2075	2076	2077	2078	2079	2080	2081	2082	2083	2084	2085	2086	2087	2088	2089	2090	2091	2092	2093	2094	2095	2096	2097	2098	2099	2100	2101	2102	2103	2104	2105	2106	2107	2108	2109	2110	2111	2112	2113	2114	2115	2116	2117	2118	2119	2120	2121	2122	2123	2124	2125	2126	2127	2128	2129	2130	2131	2132	2133	2134	2135	2136	2137	2138	2139	2140	2141	2142	2143	2144	2145	2146	2147	2148	2149	2150	2151	2152	2153	2154	2155	2156	2157	2158	2159	2160	2161	2162	2163	2164	2165	2166	2167	2168	2169	2170	2171	2172	2173	2174	2175	2176	2177	2178	2179	2180	2181	2182	2183	2184	2185	2186	2187	2188	2189	2190	2191	2192	2193	2194	2195	2196	2197	2198	2199	2200	2201	2202	2203	2204	2205	2206	2207	2208	2209	2210	2211	2212	2213	2214	2215	2216	2217	2218	2219	2220	2221	2222	2223	2224	2225	2226	2227	2228	2229	2230	2231	2232	2233	2234	2235	2236	2237	2238	2239	2240	2241	2242	2243	2244	2245	2246	2247	2248	2249	2250	2251	2252	2253	2254	2255	2256	2257	2258	2259	2260	2261	2262	2263	2264	2265	2266	2267	2268	2269	2270	2271	2272	2273	2274	2275	2276	2277	2278	2279	2280	2281	2282	2283	2284	2285	2286	2287	2288	2289	2290	2291	2292	2293	2294	2295	2296	2297	2298	2299	2300	2301	2302	2303	2304	2305	2306	2307	2308	2309	2310	2311	2312	2313	2314	2315	2316	2317	2318	2319	2320	2321	2322	2323	2324	2325	2326	2327	2328	2329	2330	2331	2332	2333	2334	2335	2336	2337	2338	2339	2340	2341	2342	2343	2344	2345	2346	2347	2348	2349	2350	2351	2352	2353	2354	2355	2356	2357	2358	2359	2360	2361	2362	2363	2364	2365	2366	2367	2368	2369	2370	2371	2372	2373	2374	2375	2376	2377	2378	2379	2380	2381	2382	2383	2384	2385	2386	2387	2388	2389	2390	2391	2392	2393	2394	2395	2396	2397	2398	2399</
------	------	------	------	------	------	------	------	------	------	------	------	------	------	------	------	------	------	------	------	------	------	------	------	------	------	------	------	------	------	------	------	------	------	------	------	------	------	------	------	------	------	------	------	------	------	------	------	------	------	------	------	------	------	------	------	------	------	------	------	------	------	------	------	------	------	------	------	------	------	------	------	------	------	------	------	------	------	------	------	------	------	------	------	------	------	------	------	------	------	------	------	------	------	------	------	------	------	------	------	------	------	------	------	------	------	------	------	------	------	------	------	------	------	------	------	------	------	------	------	------	------	------	------	------	------	------	------	------	------	------	------	------	------	------	------	------	------	------	------	------	------	------	------	------	------	------	------	------	------	------	------	------	------	------	------	------	------	------	------	------	------	------	------	------	------	------	------	------	------	------	------	------	------	------	------	------	------	------	------	------	------	------	------	------	------	------	------	------	------	------	------	------	------	------	------	------	------	------	------	------	------	------	------	------	------	------	------	------	------	------	------	------	------	------	------	------	------	------	------	------	------	------	------	------	------	------	------	------	------	------	------	------	------	------	------	------	------	------	------	------	------	------	------	------	------	------	------	------	------	------	------	------	------	------	------	------	------	------	------	------	------	------	------	------	------	------	------	------	------	------	------	------	------	------	------	------	------	------	------	------	------	------	------	------	------	------	------	------	------	------	------	------	------	------	------	------	------	------	------	------	------	------	------	------	------	------	------	------	------	------	------	------	------	------	------	------	------	------	------	------	------	------	------	------	------	------	------	------	------	------	------	------	------	------	------	------	------	------	------	------	------	------	------	------	------	------	------	------	------	------	------	------	------	------	------	------	------	------	------	------	------	------	------	------	------	------	------	------	------	------	------	------	------	------	------	------	------	------	------	------	------	------	------	------	------	------	------	------	------	------	------	------	------	------	------	------	------	------	------	------	------	------	------	------	------	------	------	--------

APPROVED

Directive 2013/55

10/10/2014 - 10:17 AM

Development Hub

Development Tools

--	--

--	--

